

GIS Service Center Standard Map Descriptions

Below is a description of the standard maps available for purchase from the St. Louis County GIS Service Center. Maps vary in size and scale. For pricing and ordering info, see our Map Order Form.

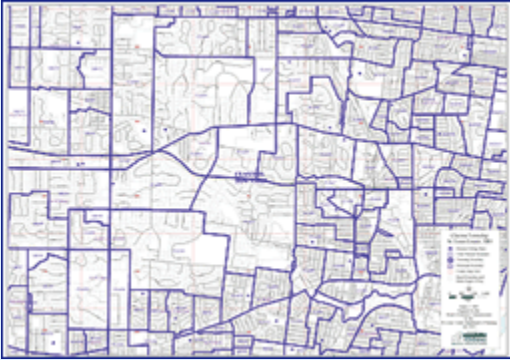
Zoning Map Series

St. Louis County's GIS Service Center produces a series of color zoning maps based on the county's planimetric grid system. The table below lists zoning-based maps we have available for purchase.

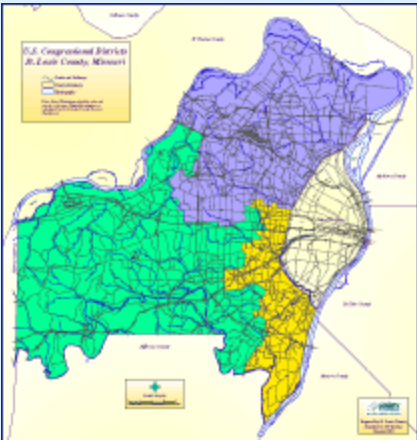
NOTE: Zoning is available only for the unincorporated areas of St. Louis County. If you are interested in the zoning of a particular municipality within St. Louis County please contact that municipality for information on their zoning ordinance and districts.

<p>Zoning with Land Use and Municipal Boundaries</p> 	<p>Features</p> <ul style="list-style-type: none">• Zoning Boundaries• Land Use (by parcel) with color fill• Municipal Boundaries• FEMA 100 Year Floodplain• Rivers• Street Network• Street Names• Last Updated: As requested• Size: 18 x 25"• Scale: 1"=400'
<p>Features</p> <ul style="list-style-type: none">• Zoning Boundaries• Parcel Boundaries• Municipal Boundaries• FEMA 100 Year Floodplain• Rivers• Street Network• Street Names• Last Updated: As requested• Size: 18 x 25"• Scale: 1"=400'	<p>Zoning with Parcels and Municipal Boundaries</p> 

Township Map Series

	<p>Townships</p> <p>Features</p> <ul style="list-style-type: none">• Precinct Boundaries• Township Boundaries• Municipal Boundaries• Parcels• Rivers• Street Network• Size: varies most are 34 x 44" or larger• Scale: 1"=800'
---	---

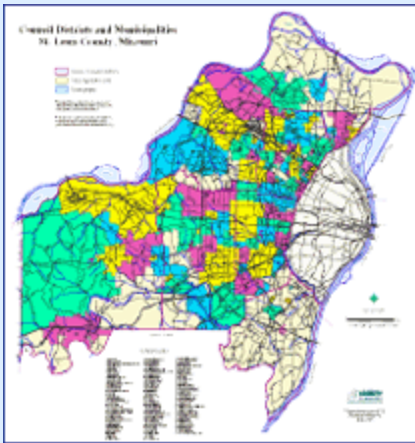
Countywide Map Series 1:100,000 Scale

	<p>Congressional Districts</p> <p>Features</p> <ul style="list-style-type: none">• Rivers• Major Street Network• Major Street Names• Congressional Districts• Size: 25 x 26"• Scale: 1:100,000
---	---

County Council Districts

Features

- Rivers
- Major Street Network
- Major Street Names
- County Council Districts
- Size: 25 x 26"
- Scale: 1:100,000



County Council Districts and Municipalities

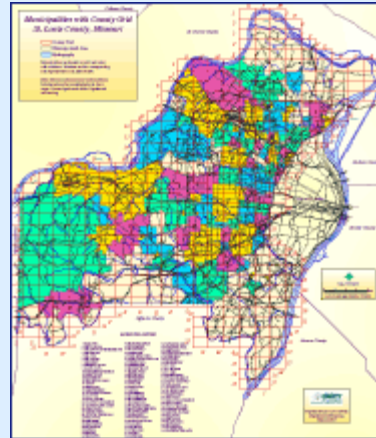
Features

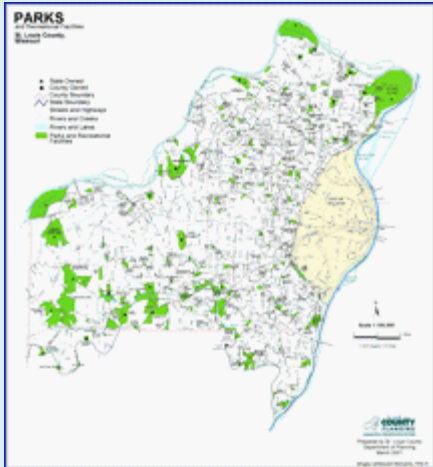
- Rivers
- Major Street Network
- Major Street Names
- Municipalities
- County Council Districts
- Size: 25 x 26"
- Scale: 1:100,000

Municipalities with Map Grid

Features

- Municipalities w/ color fill
- Planimetric Reference Grids
- Rivers
- Major Street Network
- Major Street Names
- Size: 25 x 26"
- Scale: 1:100,000





Parks and Recreational Facilities

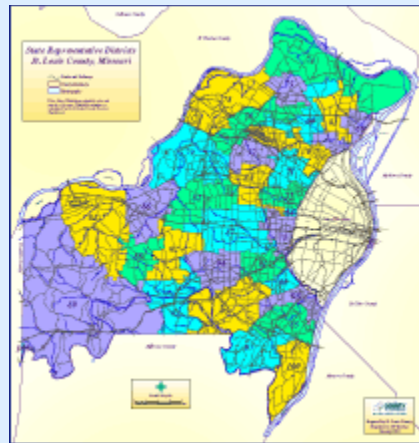
Features

- Parks and Recreational Facilities
- Rivers
- Major Street Network
- Major Street Names
- Size: 24 x 26"
- Scale: 1:100,000

Representative Districts

Features

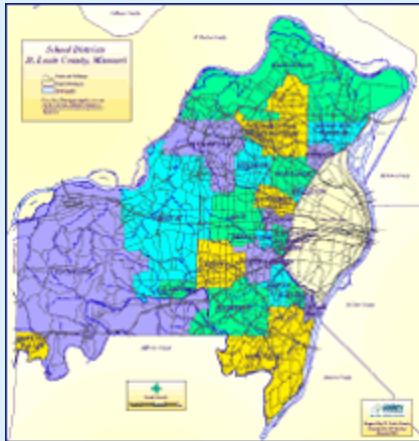
- Rivers
- Major Street Network
- Major Street Names
- State Representative Districts
- Size: 25 x 26"
- Scale: 1:100,000



School Districts

Features

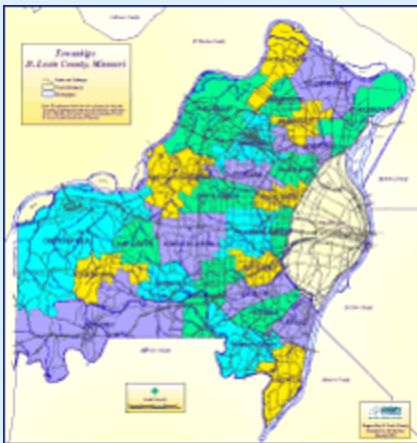
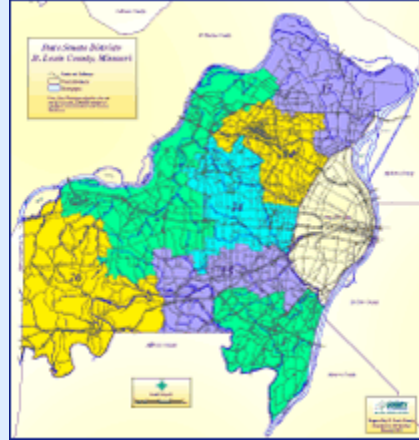
- Rivers
- Major Street Network
- Major Street Names
- School Districts
- Size: 25 x 26"
- Scale: 1:100,000



State Senate Districts

Features

- Rivers
- Major Street Network
- Major Street Names
- State Senate Districts
- Size: 25 x 26"
- Scale: 1:100,000



Townships

Features

- Townships with color fill
- Rivers
- Major Street Network
- Major Street Names
- Size: 25 x 26"
- Scale: 1:100,000

Countywide Map Series 1:62,500 Scale



1990 Census Tracts

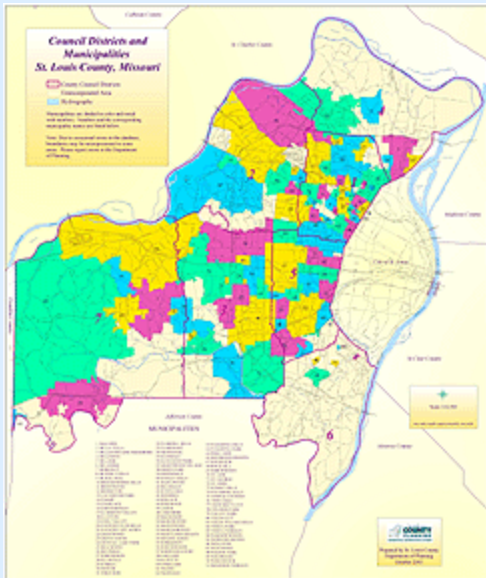
Features

- 1990 Census Tracts
- Rivers
- Streets Network
- Street Names
- Size: 35 x 40"
- Scale: 1:62,500

2000 Census Tracts

Features

- 2000 Census Tracts
- Rivers
- Streets Network
- Street Names
- Size: 35 x 40"
- Scale: 1:62,500



County Council Districts and Municipalities

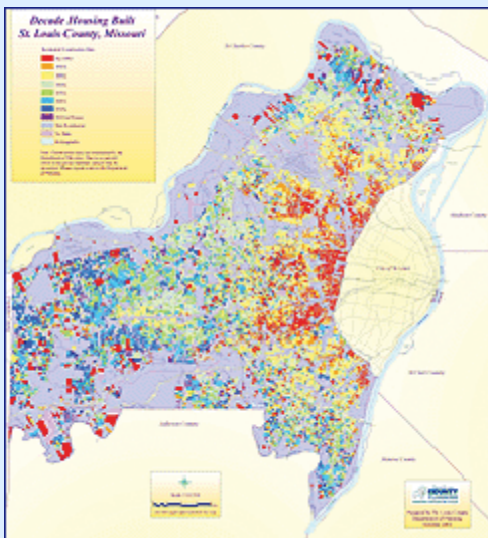
Features

- County Council Districts
- Municipalities with color fill
- Rivers
- Street Network
- Street Names
- Size: 36 x 44"
- Scale: 1:62,500

County Council Districts and Zip Codes

Features

- County Council Districts with color fill
- Zip Code Areas
- Rivers
- Street Network
- Street Names
- Size: 36 x 40"
- Scale: 1:62,500



Decade Housing Built

Features

- Decade housing built represented using gradient color fill
- Rivers
- Major Street network
- Major Street names
- Size: 36 x 44"
- Scale: 1:62,500

Fire Protection Areas

Features

- Fire Protection Areas
- Rivers
- Street Network
- Street Names
- Size: 35 x 40"
- Scale: 1:62,500





Fire Protection Areas and Municipalities

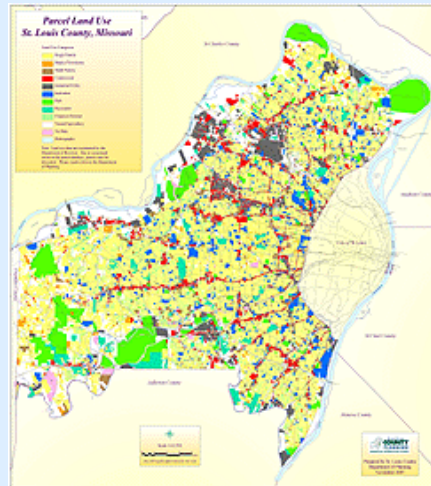
Features

- Fire Protection Areas
- Municipalities with color fill
- Rivers
- Street Network
- Street Names
- Size: 35 x 40"
- Scale: 1:62,500

Land Use

Features

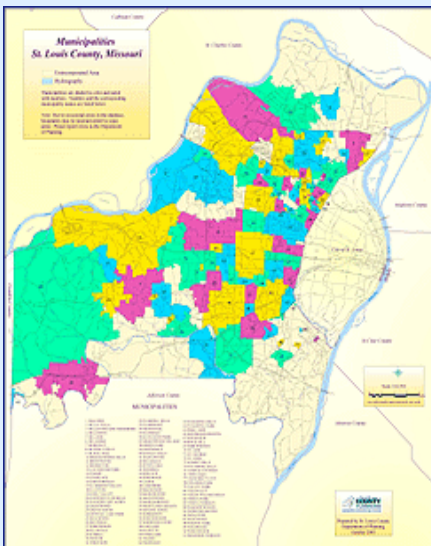
- Land Use (by parcel)
- Rivers
- Street Network
- Street Names
- Size: 36 x 44"
- Scale: 1:62,500

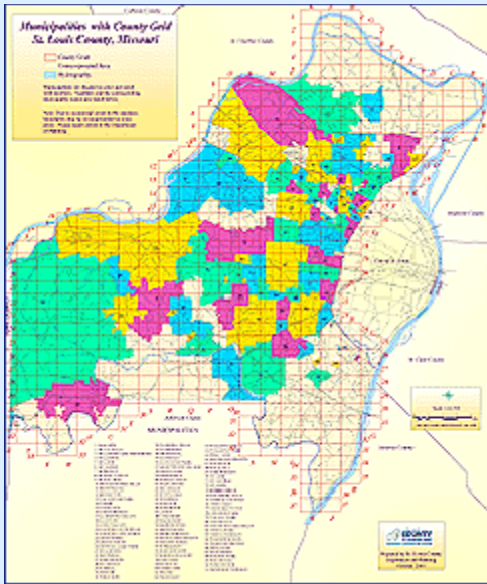


Municipalities

Features

- Municipalities with color fill
- Rivers
- Street Network
- Street Names
- Size: 36 x 44"
- Scale: 1:62,500





Municipalities with Map Grid

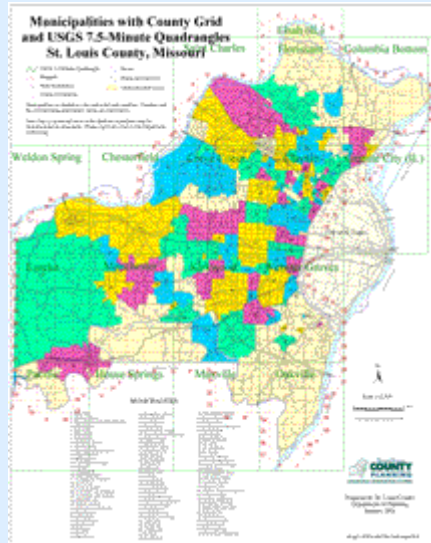
Features

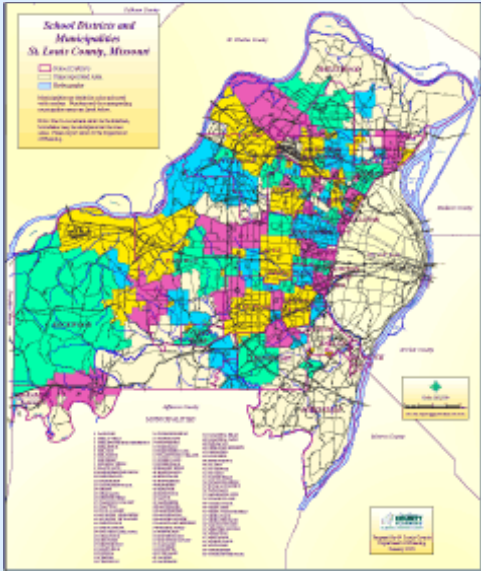
- Municipalities w/ color fill
- Planimetric Reference Grids
- Rivers
- Streets Network
- Street Names
- Size: 36 x 44"
- Scale: 1:62,500

Municipalities with Map Grid and USGS Quadrangles

Features

- Municipalities with color fill
- USGS Quadrangles
- Planimetric Reference Grids
- Rivers
- Street Network
- Street Names
- Size: 35 x 44"
- Scale: 1:62,500





School Districts and Municipalities

Features

- Municipalities with color fill
- School Districts
- Street Network
- Street Names
- Size: 36 x 44"
- Scale: 1:62,500

School Districts and Zip Codes

Features

- School Districts with color fill
- Zip Code Areas
- Street Network
- Street Names
- Size: 36 x 40"
- Scale: 1:62,500



Street Centerlines

Features

- Street Network
- Street Names
- Rivers
- Size: 36 x 44"
- Scale: 1:62,500



