



3R Review

Fall 2006

Reduce ♻️ Reuse ♻️ Recycle ♻️
Naturally!

Saint Louis
COUNTY
HEALTH

IT ALL STARTED WITH PIGS

ONE HUNDRED YEARS OF FINDING THE RIGHT PLACE FOR WASTE

As the Saint Louis County Department of Health celebrates its 100th anniversary, we reflect back on how waste management has evolved in the last century.

Did you know that before the modern day convenience of garbage disposals, pigs were used to dispose of food waste? In the early 1900s, food waste was taken to “piggeries” where

75 pigs would consume an estimated one ton of food refuse per day. Piggeries remained open until the late 1960s. Incinerators were also used as a method of waste disposal. By 1914, nearly 300 incinerators were operating in the United States and Canada. As you can imagine, the smoke coming

continued on p.3



DEAR READERS,

Happy Birthday to Us! Don't look now, but 100 years has gone by fast for the Saint Louis County Department of Health! Established in 1906, our department has grown and evolved as the needs of the residents we serve have changed.

The Department has long worked to ensure the healthiest setting for residents. In addition to caring for the ill, we have established comprehensive programs to prevent illnesses. An important component of those programs is tied to the proper management of our wastes.

One of the biggest challenges we face is providing services that encourage the proper use of today's resources, while at the same time, being able to anticipate and plan for future needs. Our involvement with the new regional electronics recycling program, **e-cycle St. Louis**, is a great example of how to meet this challenge (and win!). ReSource St. Louis is another great program our Department has helped spearhead. This project is focused on diverting construction waste from landfills by increasing recycling efforts and materials reuse. We are also working with community partners and businesses to create permanent drop-off sites for household chemicals such as motor oil, paint, and pesticides – stay tuned for more details!

None of these successes would have been possible without the hard work of the dedicated Department staff. Please join me in thanking them for a job well done!

Dolores Gunn, MD

Director, Saint Louis County Department of Health



FALL '06 HOUSEHOLD CHEMICAL COLLECTION EVENTS

As the colder months of fall approach, children and pets will spend more time playing indoors. Now is a good time to clean out unwanted household chemicals that can pose health risks to them and are harmful to the environment. Leftover household chemicals can be disposed of at upcoming household chemical collection events this fall.

FREE
to all St. Louis County
Residents!

Proof of residency, such as a driver's license or tax bill, will be required.

The costs are covered by Saint Louis County landfill surcharge funds.

Note: These events are for residents ONLY. Materials from business, commercial, non-profit, and government organizations are prohibited by law.

ACCEPTABLE ITEMS: Paints, stains, varnishes, pesticides, herbicides, poisons, gasoline and other fuels, solvents and strippers, aerosols, motor oil and filters, gas cylinders (BBQ-pit size or smaller), fluorescent tubes, rechargeable batteries,

anti-freeze, brake and transmission fluids, pool chemicals and other acids and bases, car batteries, wood preservatives, driveway sealant, and mercury-containing items (thermometers, thermostats, salts).

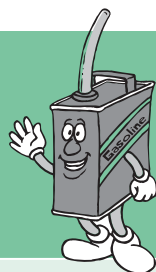
UNACCEPTABLE

ITEMS: Explosives and ammunition, radioactive waste, smoke detectors, medical waste, household trash, tires and other bulky items.

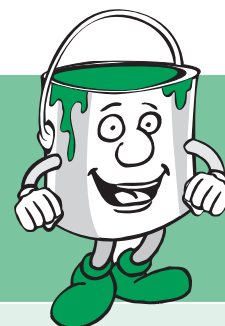
Due to program popularity, there may be long lines of traffic. Your patience is appreciated. For more information, visit www.stlouisco.com/doh or call the Health Department at **314-615-8958**.

Did You Know?

- Certain household products such as motor oil can be recycled any time.
- Most oil change shops will accept up to 5 gallons of used motor oil at no charge.



ALL COLLECTION EVENTS RUN FROM 8 A.M. TO 3 P.M., RAIN OR SHINE



Sunday, October 22	Town and Country Crossing, 14250 Clayton Road (West of Hwy 141)
Saturday, October 28	Westfield Shoppingtown South County, South of Dillard's and Sears stores (Enter on Lemay Ferry Rd., south of S. Lindbergh)
Saturday, November 4	St. Louis Community College - Florissant Valley Campus (On Pershall Rd., near I-270 and W. Florissant exit)

LOOKING FOR YOUR FEEDBACK

This 3R newsletter will be undergoing design changes this fall and we are interested in what ideas our readers have about how it should look and what types of articles you want to read. Please share your feedback by calling La'Rhonda Garrett at 314 615-7833 or sending her an e-mail at LGarrett@stlouisco.com. Thanks!

REDUCE, REUSE & RECYCLE TO MEET 50% WASTE DIVERSION GOAL

Saint Louis County has set a new goal to divert 50% of the trash going to landfills by 2010. Below are a few ideas to get us moving in that direction.

1. Stop delivery of unsolicited mail to your home from national companies by sending a postcard with your name, address and names of others in your household requesting this service to: Mail Preference Service, Direct Marketing Association, P.O. Box 643, Carmel, NY 10512.
2. Drop off old electronics such as televisions, stereos, computers, and printers at one of 10 different e-cycle St. Louis locations. For more information on locations and accepted items, visit www.ecyclestlouis.org.
3. Coordinate a neighborhood pick-up day with a local charity (i.e. Salvation Army) to come by on a specific day and time. A week prior to the pick-up, place informational flyers in all the neighbors' mailboxes.
4. Create a weekend challenge for your family. Over the course of two days see if you can move anything from the trash bin to the recycle bin with the goal of reducing trash by half.

Now, with that being said, after you read this newsletter, you can put it in the bird cage, recycle bin, or a friend's mailbox!
Come on Saint Louis County, we can do this!

IT ALL STARTED WITH PIGS

(continued from p.1)

from those incinerators and other open burning operations made for some hazy – and unhealthy! – days along the Mississippi! Improvements evolved over time. Here are some highlights:

1920s – Early “trash dump” sites were used. Wetlands near cities were converted into garbage disposal sites, with ash and dirt as a top cover.

1940s – First efforts to develop more sanitary trash disposal methods. In 1945, 100 cities in the U.S. were using “sanitary landfills.”

1960s – Saint Louis County established a Solid Waste Management Program focused on inspection of solid waste facilities.

1970s – In 1970, 97% of authorized landfills in Missouri were contributing to air, land or water pollution. To address this, state and county leaders developed regulations that continue to protect public health and the environment today. The most significant regulation was a financial guarantee for the proper closure, maintenance and monitoring of landfills for 20 years after closure.

1990s – The County's Solid Waste Coordination Office was created to encourage recycling, launch a public education program, and perform semi-annual household hazardous waste collection events.

Today, nine landfills serve area residents' waste management needs. Department of Health staff regularly monitor those landfills within the County boundaries... and are happy to report that no pigs have been found!

BEFORE YOU ORDER THOSE CERAMIC TILES...

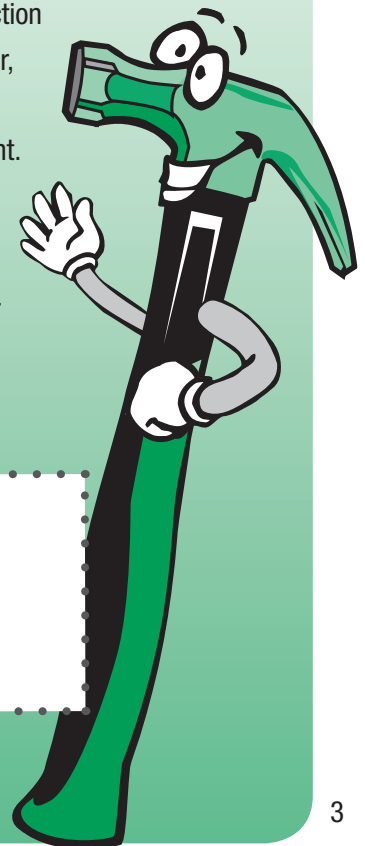
If you're planning a home or office remodeling project, here's a great opportunity to save a few bucks and help the environment too. ReSource St. Louis has just launched a website with listings of leftover, new construction materials available at a reduced price or for free. Reusable materials from demolition projects are also listed.

ReSource St. Louis is a coalition of local businesses and organizations committed to construction and operational processes that foster, support and promote conscientious management of the built environment.

Visit www.resourcestlouis.org to see what's available or to post leftover items from a construction or demolition project.

Did You Know?

Roughly 12% of waste sent to landfills is from construction and demolition projects.



KIDS' KORNER: A HISTORY OF TRASH

Celebrate the 100th anniversary of the Saint Louis County Department of Health by finding these hidden words. All of the words connect to our history of finding the best ways to dispose of trash. Find out more by reading "It All Started With Pigs" on page 1. Words may be forward, backward or diagonal.

S	O	L	I	D	W	A	S	T	E	R	D
T	L	E	I	H	K	W	J	M	O	C	I
B	R	L	L	K	H	M	V	T	P	L	S
S	G	A	M	C	Y	A	A	L	A	S	P
Z	W	D	S	E	Y	R	I	N	X	N	O
Y	L	S	T	H	E	C	D	O	C	L	S
L	T	R	J	N	D	F	E	B	E	W	A
Q	Z	J	I	Q	I	U	Q	R	H	Y	L
N	E	C	L	L	K	X	M	H	L	L	W
C	N	C	L	L	D	W	S	P	L	D	J
I	Y	R	E	G	G	I	P	T	Q	Q	T
D	I	J	E	H	X	Y	B	Z	W	C	O

- DISPOSAL
- INCINERATOR
- LANDFILL
- PIGGERY
- RECYCLE
- SOLID WASTE
- TRASH DUMP

BONUS QUESTION:

Which two words describe what we do with our trash today?



Answer: Recycle and Landfill

INFORMATION BOX

For information on recycling, upcoming events and proper waste management, visit our Web site at www.stlouisco.com/doh (Click on "Waste Management" under Community Services) or call the Recycling Hotline at 314-286-9200.

This newsletter and programs described herein are made possible by the voter-approved 5% surcharge on waste disposed in Saint Louis County landfills. The Health Department utilizes these funds for the benefit of Saint Louis County residents. This newsletter is printed on recycled paper.