

# 3R Review

Spring 2006

Reduce ♻️ Reuse ♻️ Recycle ♻️  
*Naturally!*

Saint Louis  
**COUNTY**  
**HEALTH**

## ELECTRONICS RECYCLING PROGRAM TAKES OFF IN ST. LOUIS REGION

If your old computer, stereo or TV is collecting dust in the basement and you don't know what to do with it, you're in luck. The St. Louis region now has an electronics recycling program with a drop-off location near you!

### Meet *e-cycle St. Louis*

The *e-cycle St. Louis* program is a regional effort aimed at encouraging residents to re-use or recycle old or unwanted electronics instead of pitching them. The *e-cycle St. Louis* program has registered 10 locations – a mixture of non-profit, privately operated, government-sponsored organizations – as official collection sites. With these sites and many other local options for donating or refurbishing electronics, St. Louis joins the growing list nationwide of leaders in providing recycling options for consumer electronics.

### Why recycle electronics?

Taking electronics out of the waste stream will go a long way toward helping us reach the County's new 50% waste diversion goal. Old electronics often contain useful materials, such as precious metals, glass, and plastics, which should be recovered rather than buried in a landfill. With more than two million tons of electronics discarded every year in the U.S., think how much landfill space can be saved by reusing and recycling!

Another important reason to keep old electronics out of the landfill is that electronic waste can be harmful to the environment if not disposed of properly. Many electronic products contain toxic substances such as lead, cadmium, mercury, and arsenic. When these substances leach into soil, air, and water, they pose a risk to human health and the environment.

### About *e-cycle St. Louis*

The St. Louis Regional Partnership for Electronics Recovery, a cooperative effort of government agencies and electronics recyclers from across the region, developed *e-cycle St. Louis* to ensure electronics are managed in an environmentally safe manner. Funding for the program is provided through a grant from the St. Louis-Jefferson Solid Waste Management District and the Missouri Department of Natural Resources.



**ELECTRONICS RECYCLING  
FOR THE REGION**

[www.ecyclestlouis.org](http://www.ecyclestlouis.org)

See page 2 for a list of drop-off locations!

## 50% WASTE DIVERSION: THAT'S THE GOAL!

During the last few months, the Health Department has been involved in an intense effort to develop a new comprehensive waste management plan for Saint Louis County. The overall goal: a 50% waste diversion rate by the year 2010. (The rate is the amount of trash that is recycled or reused instead of being sent to the landfill.) In 2003, Saint Louis County residents diverted 30% of their waste; now we are shooting for 50%.



What can individuals do? Throughout this newsletter and those to come, you will find many different ways to reduce waste: tips on reuse, yard waste-reduction ideas and information about new recycling opportunities.

Individuals and businesses can take advantage of existing recycling programs such as Paper Retriever™ (for paper)

continued on page 3



ELECTRONICS RECYCLING  
FOR THE REGION

### St. Louis County

University City Recycling Center  
975 Pennsylvania  
University City, MO 63130  
314-862-6767  
www.ucitymo.org  
M-F 8-5; Sa 8-Noon

DCAL Services  
292 East Avenue  
Webster Groves, MO 63119  
314-918-8833  
www.dcalervices.com  
M-F 8-5; Evening/weekend by  
appointment

### City of St. Louis

Gunther Electronics  
5080 Delmar Blvd.  
St. Louis, MO 63108  
314-367-9933  
www.guntherelectronics.com  
M,T,Th,F 8-5, Wed 8-7

Hi-Tech Charities  
1371 Hamilton Avenue  
St. Louis, MO 63112  
314-389-5737  
www.hitechcharities.org  
M-F 8-5; Call for weekend/  
evening hours

RIMCO (URI)  
101 Bremen Avenue  
St. Louis, MO 63147  
630-562-8101  
M-F 7:30-4, Sa 8-12

WITS  
643 E. Holly  
St. Louis, MO 63147  
314-382-1650  
www.witsinc.org  
M-Sa 9-5

### Jefferson County

Hogenmiller Appliance and  
Electronics  
1425 Kohler City Plaza  
Barnhart, MO 63012  
636-467-5239  
M-F 7-2; Call for weekend/  
evening hours

### St. Charles County

EPC  
3941 Harry S. Truman Blvd.  
St. Charles, MO 63301  
636-443-1999  
www.epcusa.com  
M-F 9-6; Sa 9-2

Recycle Works  
St. Charles County Government  
(1) 60 Triad South Drive  
St. Charles, MO 63304  
(2) 2110 E. Pitman Ave.  
Wentzville, MO 63385  
636-949-7415  
www.scchealth.org/es  
M-Sa 8:30-4:30

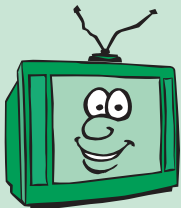
## What Electronics to Recycle

Just about any type of elec-  
tronic product can be recycled  
at the *e-cycle St. Louis* sites,  
including:

- TVs and VCRs
- Computers (hard drives, monitors, keyboards)
- Printers
- Cell phones
- Hand-held devices
- And much more!

## Any Charges?

Most electronic items are recycled at no charge; however, some items require fees to cover the cost of proper recycling. Examples include the dismantling of a large copy machine or handling of a cathode ray tube in a computer or television which can contain up to four pounds of lead.



In Saint Louis County, 20-25% of households have at least one unused computer or television in their home, according to a 2001 survey. This translates into an estimated 181,500 electronic items in need of safe disposal. That's more than **4,000 TONS** of electronics that will need to be reused, recycled or disposed of properly!

# BECOME A BACK YARD COMPOSTER

Want more information on improving management of yard waste through back yard composting? Want a free compost bin? If your community or club is interested in learning about composting, Saint Louis County Health Department is offering free Back Yard Composter Training, now through June 30, 2006.



The training will be scheduled at a time and location that is mutually agreeable for your group and the instructor. In this two and a half-hour class, participants will learn the biology of composting, how to construct a compost bin, the essentials of successful composting, and the beneficial uses for compost. In addition, while supplies last, each participant can receive a free compost bin at the end of the training.

To schedule a Back Yard Composter Training (10 person minimum), please contact Mary Patterson at 314-615-6878 or email at MPatterson2@stlouisco.com.

# SPRING 2006 HOUSEHOLD CHEMICAL COLLECTION EVENTS



## FREE to Saint Louis County Residents!

Planning to do some spring cleaning? Now is a great time to rid your home of old cans of paint, pesticides and other

unwanted household chemicals taking up space in your garage and basement. Plan to attend an upcoming household chemical

collection event this spring. At the events listed below, you can properly dispose of leftover household chemicals that can be harmful to the environment and pose a risk to public health.

### Rain or Shine

All events run from 8 a.m. to 3 p.m.

**Sunday  
April 9**

Town and Country Crossing  
14250 Clayton Rd  
(West of Highway 141)

**Saturday  
May 6**

Westfield Shoppingtown South County  
South of Dillard's and Sears stores  
(Enter on Lemay Ferry Rd., south of  
S. Lindbergh)

**Saturday  
May 20**

St. Louis Community College -  
Florissant Valley Campus  
(On Pershall Rd., near I-270 and  
W. Florissant exit)

Proof of residency, such as a driver's license or tax bill, will be required. The costs are covered by Saint Louis County landfill surcharge funds.

**Note:** These events are for residents ONLY. Materials from business, commercial, non-profit, and government organizations are prohibited by law from participating.

**ACCEPTABLE ITEMS:** Paints, stains, varnishes, pesticides, herbicides, poisons, gasoline and other fuels, solvents and strippers, aerosols, motor oil and filters, gas cylinders (BBQ-pit size or smaller), fluorescent tubes, rechargeable batteries, anti-freeze, brake and transmission fluids, pool chemicals and other acids and bases, car batteries, wood preservatives, driveway sealant, and mercury-containing items (thermometers, thermostats, salts).

**UNACCEPTABLE ITEMS:** Explosives and ammunition, radioactive waste, smoke detectors, medical waste, household trash, tires and other bulky items.

**Due to program popularity, there may be long lines of traffic. Your patience is appreciated.**

For more information, visit [www.stlouisco.com/doh](http://www.stlouisco.com/doh) and click on "Waste Management" or call the Health Department at 314-615-8958.

### Did You Know...

Certain household products such as motor oil and rechargeable batteries can be recycled any time. Check out our website – look for the on-line recycling directory.

Just a reminder: Keep in mind that source reduction is the best way to reduce waste to the landfill and help us meet the 50% waste diversion goal. If appropriate, buy only what you need and use it all up. So, practice source reduction so you don't have to come back!

continued from page 1

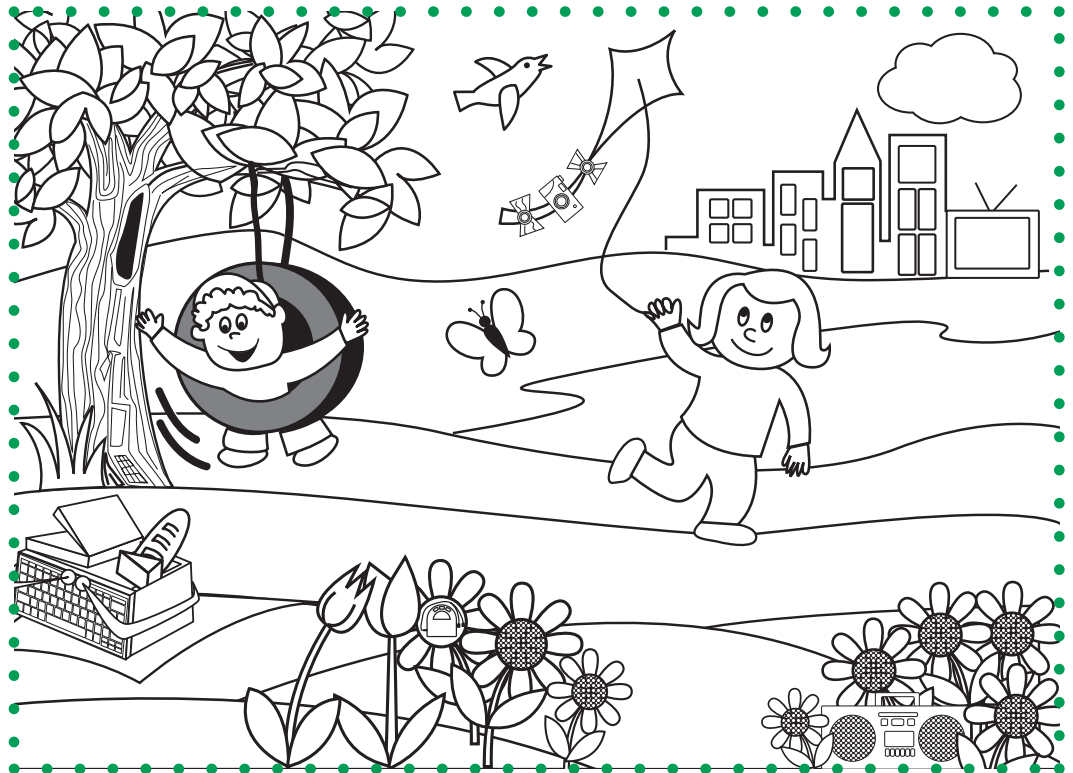
and Recycle Challenge™ (for aluminum cans). Dropping off paper and aluminum cans at neighboring schools or churches, earns them cash for every pound. Can't get much greener than that!

The plan should be finalized shortly. Once the County Council approves necessary supporting ordinances, get ready for a big push toward meeting that 50% diversion goal. Together we can reach this important milestone to make our community a healthier place to live...now and into the future.

## KIDS' KORNER: HIDDEN PICTURES

Did you know that old or broken electronic items can be recycled? How many of the recyclable items listed below can you find in this picture?

- Cell Phone
- Keyboard
- CD/Radio Boombox
- Television
- Digital Camera
- Walkman Radio



**Remember - old electronics should be re-used or recycled!**

### INFORMATION BOX

For information on recycling, upcoming events and proper waste management, visit our Web site at:  
**[www.stlouisco.com/doh](http://www.stlouisco.com/doh)** (Click on "Waste Management" under Community Services)  
or call the Recycling Hotline at 314-286-9200.

*This newsletter and programs described herein are made possible by the voter-approved 5% surcharge on waste disposed in Saint Louis County landfills. The Health Department utilizes these funds for the benefit of Saint Louis County residents. This newsletter is printed on recycled paper.*