

Think
inside
the Bin

Sponsored by the Saint Louis County Health Department

3R Review

Winter 2006-2007

Reduce ♻️ Reuse ♻️ Recycle ♻️
Naturally!

Saint Louis
COUNTY
HEALTH

LOCAL BUSINESSES "THINK INSIDE THE BIN"

RECYCLING AND HELPING SCHOOLS

A big thanks goes out to the businesses that participated in the Department of Health's pilot recycling program in Overland and Affton in 2006. "Think Inside the Bin" participants received deskside bins to recycle all the newspaper, trade journals, envelopes and office paper generated by the business, which they then dropped off regularly at the green and yellow Paper Retriever™ bins at nearby schools. Schools with Paper Retriever bins are paid by the pound for all paper collected and the money raised helps the school to make special purchases such as computers and playground equipment.

Robert Rodriguez of Hacienda Restaurant in Overland said they like the program because of the opportunity it gives them to

help local schools. "It's a wonderful program and everyone should participate," he said. Debbie Weltman of Terra Art said that receiving free recycling bins was very helpful and that the bins "make it look more professional" than their previous collection method of brown paper bags. "This program made it easier to recycle," she said.

Think Inside the Bin will soon be offered to other businesses in Saint Louis County. For more information contact Mary Patterson at 314-615-6878 or visit www.resourcefulschools.org. It's a great way to support your local school and save trees!

See page 2 for a listing of all the businesses that helped support Think Inside the Bin in 2006.

REDUCE YOUR WAIST AND YOUR WASTE

How are those New Year's resolutions going? If you're like millions of Americans, you've probably resolved to diet and exercise more. But here's an easy resolution that helps you and your community – increase your recycling! Saint Louis County will team up with you so you are not alone. Our resolution is to work to reduce the amount of waste going to landfills by 50% by 2010. If we work together we can all benefit and reach our goal. This newsletter will provide you with information to help achieve that goal.

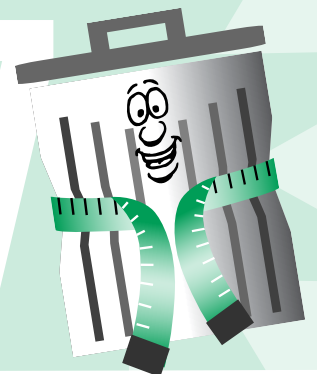
You might wonder where we rank in recycling. Missouri ranks 6th in the nation – not bad! But if you want to think

of it in baseball terms we would have just made it the playoffs, but not out of the first round!

"Being the best" is in our blood in St. Louis with the best baseball team, the best toasted ravioli and the best blues. It would be nice to add the best recyclers!

2007

Our goal: 50% reduction



THINK INSIDE THE BIN

THANKS TO THE FOLLOWING BUSINESSES THAT HELPED SUPPORT THINK INSIDE THE BIN IN 2006

PARTICIPATING BUSINESSES (AFFTON AREA)	SCHOOL SUPPORTED
All Family Care	Seven Holy Founders
Ellsworth Enterprises	Seven Holy Founders
Eckelkamp & Associates	Seven Holy Founders
First Missouri Credit Union	Mehlville High School
Prudential Select Properties (Bingelli/LaPlante)	Affton-Lindbergh Early Childhood
Terra Art	Mesnier Elementary

PARTICIPATING BUSINESSES (RITENOUR/OVERLAND AREA)	SCHOOL SUPPORTED
Aesthetics Institute of St. Louis	Iveland Elementary
Allstate Insurance - Tom Drennan	Ritenour Middle School
Carol's Florist	Our Redeemer
Drive, Insurance from Progressive	Ritenour Administration
E. Robinson & Associates	Ritenour Administration
Lighting Service, Inc.	Wyland Elementary
D.J.'s Overland Barber Shop	Ritenour Administration
Mary's Sewing	Ritenour Administration
Hacienda Restaurant	Ritenour Administration
Ortmann Funeral Home	Iveland Elementary

TRASH REDUCTION TIPS

- Did you receive the latest laptop, PlayStation or other cool electronic recently? How about giving the old one new life? A community center or YMCA might want it, or you can take it to an **e-cycle St. Louis** location near you. Visit www.ecyclestlouis.org for details.

- Paying your bills is never fun, but you can save time, postage, and envelopes by paying bills online. Once you make the switch you'll wonder why you didn't do it long ago!



RECYCLING UPDATES

COUNTY COUNCIL TAKES BIG STEP TOWARDS MEETING THE 50% WASTE DIVERSION GOAL

The Saint Louis County Council approved changes to the Solid Waste Management Code that incorporates recycling as part of basic waste management in Saint Louis County. The changes, which became effective December 28, 2006, will apply to one and two family residences and include:

- Curbside recycling will now be part of basic service offered by all trash haulers operating in Saint Louis County.
- The County Executive is authorized to establish trash collection districts for unincorporated Saint Louis County, by January 15, 2008. Each district's contract will be awarded to a single hauler that submits the most responsible bid or proposal.

Planning for implementation of these changes is underway. To read a copy of the new ordinance and to receive the most current information on progress and developments, please visit our website or call (314) 615-8958.

RECYCLING CONTESTS

In a previous issue of the newsletter, we asked for and received a lot of great ideas for recycling contests, and some will soon be coming to fruition. Here's one contest already underway that you can help support:

Schools throughout Saint Louis County are competing this school year to **win park benches made of #2 recycled plastics**. Your neighborhood school could be one of them! You can help by bringing aluminum cans, newspapers, junk mail, magazines and office paper to recycling bins at schools – usually these bins are located on parking lots or near trash bins. Look for "Recycle Challenge" bins for the cans, and "Paper Retriever™" bins for paper.

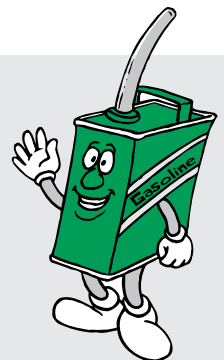
These programs are great fund raisers, earning the schools money for computers, playground equipment, and more.

For more details about the contests and to see how your local school is doing, visit our Resourceful Schools website at www.resourcefulschools.org.



HOUSEHOLD CHEMICAL COLLECTIONS CONTINUE TO BE POPULAR

Thank you to **3,900** residents who brought their leftover household chemicals to the County's fall collection events in October and November!



Participants brought more than 362,000 pounds of material to be diverted from landfills, 60% of which can be recycled, reused or blended for energy recovery.

As citizens become more aware and personally responsible for the household hazardous waste they generate, they turn to local governments and service providers for safe, convenient and readily accessible management alternatives. For more than eight years, we have conducted one-day collections in an effort to meet the needs of Saint Louis County. In 2007, we will be exploring options for providing environmentally conscious residents with more convenient, year-round collection.

KIDS' KORNER: EGG CARTON ANIMALS

Here's a fun craft using items that are NOT recyclable. It's always good to think of ways to reuse items instead of throwing them away. Try these, then see what other things you can create using an egg carton!

What you'll need:

- Egg carton
- Scissors
- Crayons or markers
- Pipe cleaners or twist ties



CATERPILLAR

- Separate between 4 - 6 cups from an egg carton
- Using the point of the scissors (ask an adult) make two small holes on one of the cups to make antennae.
- Insert pipe cleaner or twist ties for the antennae.
- Add eyes and mouth, and decorate.



LADYBUG

- Separate one cup from an egg carton
- Using markers, children can color the egg carton cup red. Then using a black marker, color in the head and make spots on the body.
- Using the point of the scissors (ask an adult) to make six small holes (three on each side) at the base of the cup. Make two small holes for antennae where the top of the head will be.
- Insert black pipe cleaner or twist tie into each side hole to make the legs and antennae.
- Paint on white for the eyes.

INFORMATION BOX

For information on recycling, upcoming events and proper waste management, call our Hotline at **(314) 286-9200** or visit our web site at www.stlouisco.com/doh and click on waste management.

This newsletter and programs described herein are made possible by the voter-approved 5% surcharge on waste disposed in Saint Louis County landfills. The Health Department utilizes these funds for the benefit of Saint Louis County residents. This newsletter is printed on recycled paper.