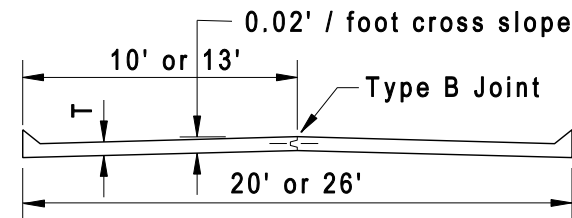


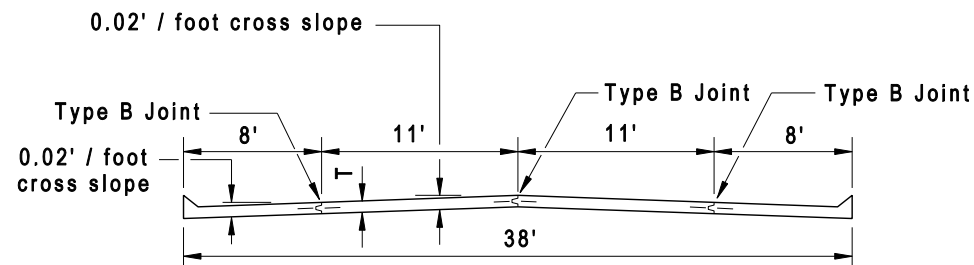
NEW	REVISIONS			
1-11-90	8-13-02	7-31-07	10-1-07	7-1-09

INTEGRAL ROLLED CURB AND CONCRETE PAVEMENT TYPICAL SECTIONS AND DETAILS FOR RESIDENTIAL STREETS

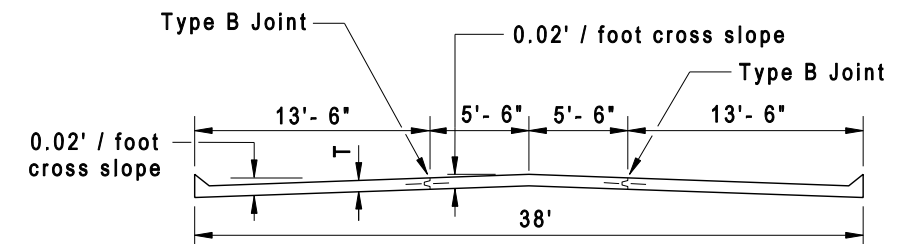
ST. LOUIS COUNTY PROJ.	
SHEET NUMBER	TOTAL SHEETS



SECTION - 20' OR 26' WIDTH



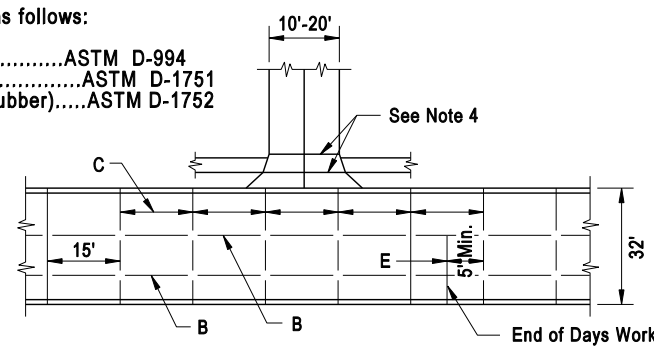
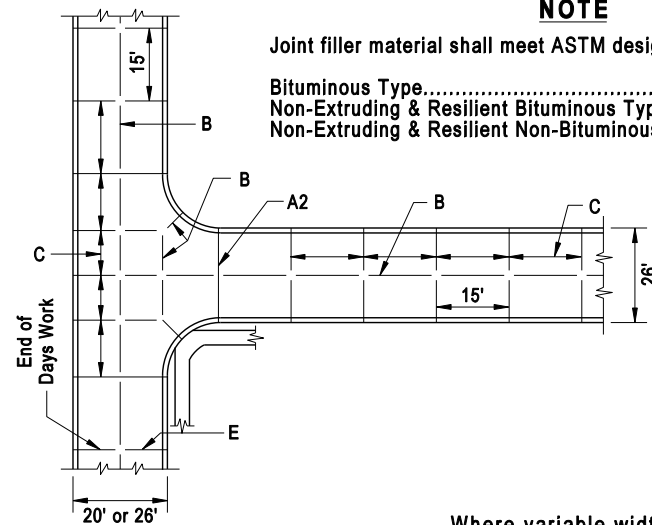
**SECTION - 38' WIDTH
WITH PARKING BOTH SIDES**



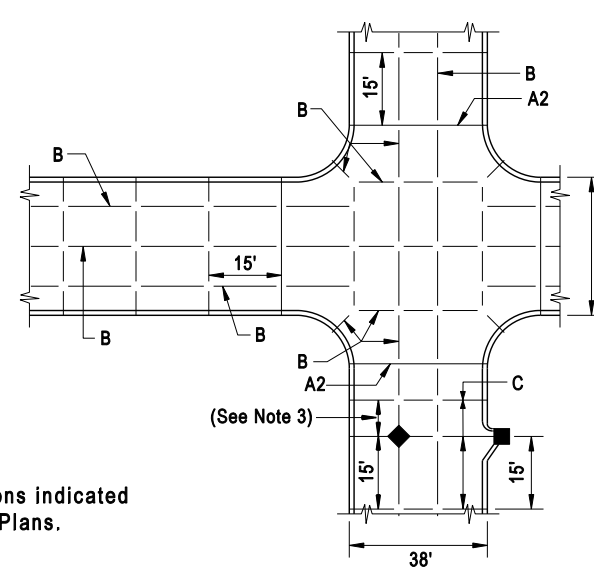
**SECTION - 38' WIDTH
WITH TURNING LANE**

NOTE

Joint filler material shall meet ASTM designations as follows:
 Bituminous Type.....ASTM D-994
 Non-Extruding & Resilient Bituminous Type (Fiber).....ASTM D-1751
 Non-Extruding & Resilient Non-Bituminous Type (Rubber).....ASTM D-1752



PLAN OF JOINT LOCATION



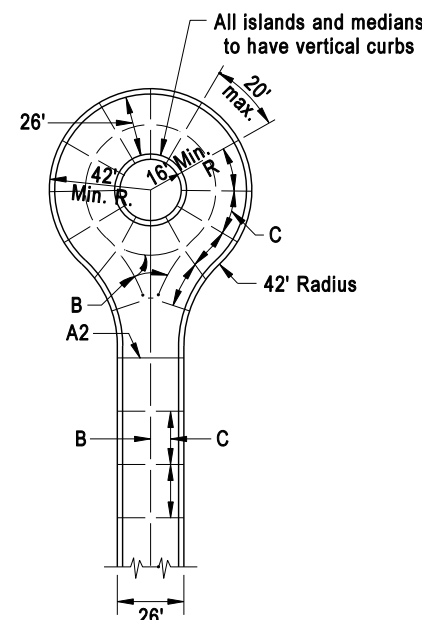
Where variable widths of intersecting pavements are shown joint spacing must conform to locations indicated on Standard Typical Sections, Intersection Channelization Details or the Approved Construction Plans.

GENERAL NOTES

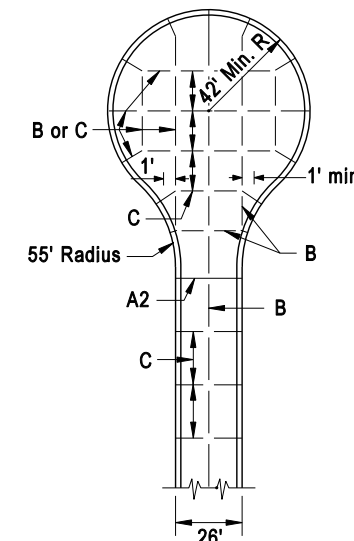
- Do not scale drawing, follow dimensions.
- All street inlets shall be separated from the pavement and curb by expansion joint material extending completely through curb and slab. Manhole casting within the pavement limits shall be boxed as shown in the "Sewer Construction Details", (Drawing 604.37).
- When a joint falls within 5ft. of, or contacts inlets, manholes, or other structures, shorten one or more panels either side of opening to permit joint to fall on round structures and at or between corners of rectangular structures.
- Driveway configurations are shown in the "Entrance Construction Details."
- Construction joints and tie bars may be omitted when curb is poured monolithic with pavement.
- Minimum thickness for pavement is:
 Residential 20' & 26' wide streets 6 inches
 Residential 38' wide streets 7 inches
- For joint and bar requirements refer to the "Pavement Construction Details for Joints and Curbs" (Standard Drawing C502.03). Note that the width and location may change the type of joint required.
- Transverse or longitudinal construction joints in slip formed pavements may be made with a groover or tool, if such device has been approved in advance by the Department.
- The locations of the TYPE B longitudinal construction joints in the sections may be interchanged for the different widths of construction if approved by the Department.
- All 5/8 inch and 1 inch diameter smooth dowel bars, 18 inches long at 12 inch centers, shall be epoxy coated.

JOINT REQUIREMENTS FOR CONCRETE PAVEMENT

STREET	JOINT TYPE	JOINT AND BAR REQUIREMENTS	
RESIDENTIAL 3 LANE 38' Wide Pavement 7" Thick Concrete	Transverse	TYPE C No Steel Bars	
	Longitudinal	Within a poured section and at the edge between two poured sections: TYPE B 5/8" ϕ deformed tie bars 30"lg. at 30" ctrs.	
RESIDENTIAL 2 LANE 20'-26' Wide Pavement 6" Thick Concrete	Expansion	TYPE A or AA 3/4" ϕ smooth dowel bars 18"lg. at 12" ctrs.	
	Transverse	TYPE C No Steel Bars	
	Longitudinal	Full Width Construction TYPE B, 1/2" ϕ deformed tie bars 30"lg. at 30" ctrs.	Half Width Construction: TYPE B modified with 1/2" ϕ deformed tie bars 30"lg. at 30" ctrs.
	Expansion	Type A or AA 3/4" ϕ smooth dowel bars 18"lg. at 12" ctrs.	



**CUL DE SAC
OPEN CENTER**



**CUL DE SAC
FULLY PAVED**

SAINT LOUIS COUNTY
DEPARTMENT OF HIGHWAYS AND TRAFFIC
CLAYTON, MISSOURI

**PAVEMENT CONSTRUCTION DETAILS
INTEGRAL ROLLED CURB
AND CONCRETE PAVEMENT
TYPICAL SECTIONS AND DETAILS**

REVISION DATE: July 1, 2009

DRAWING
C502.02