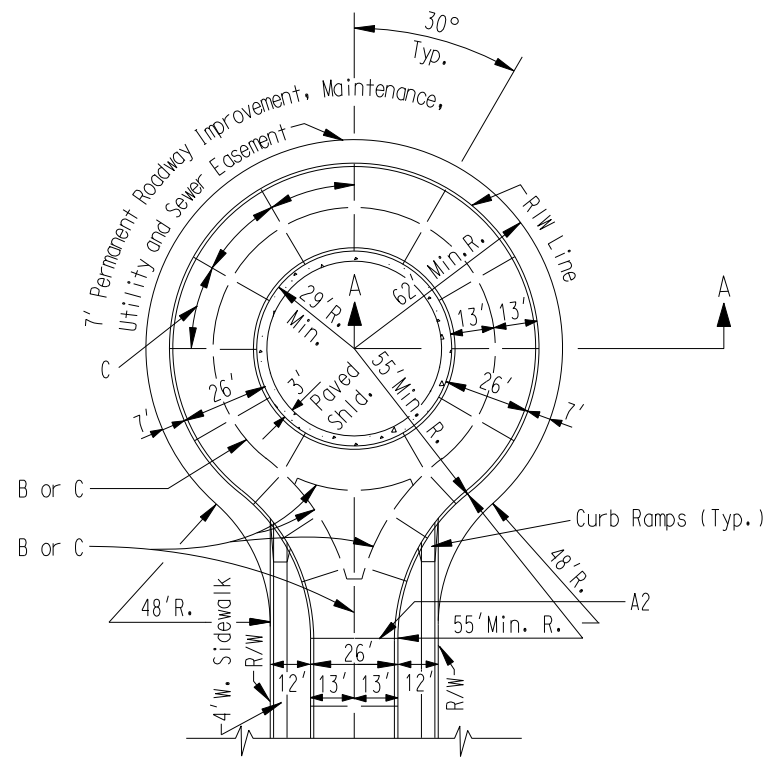
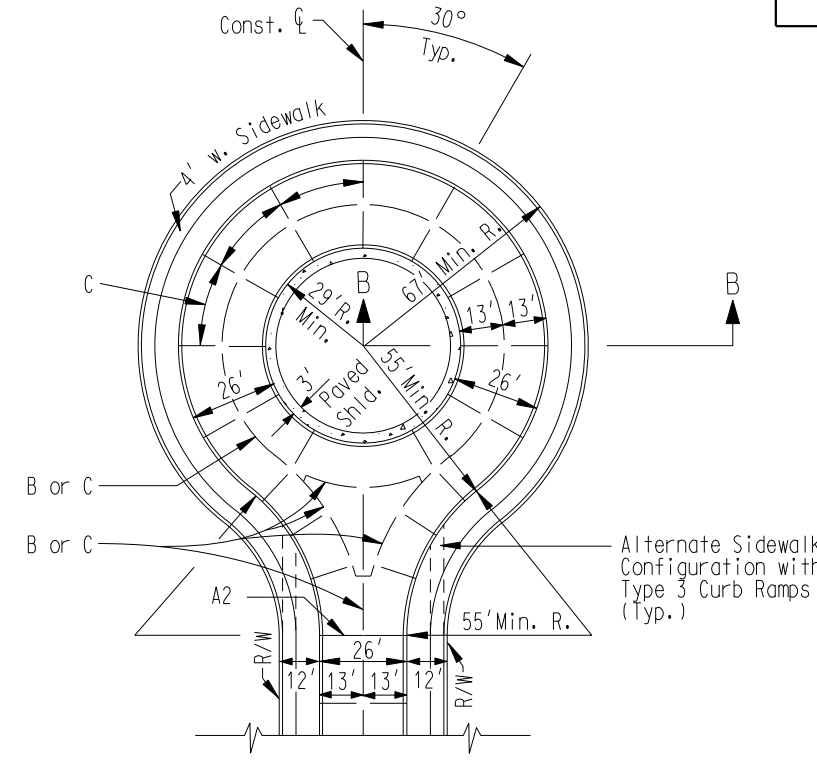


NEW	REVISIONS			
1-11-90	7-8-99	6-5-07	7-31-07	1-1-10

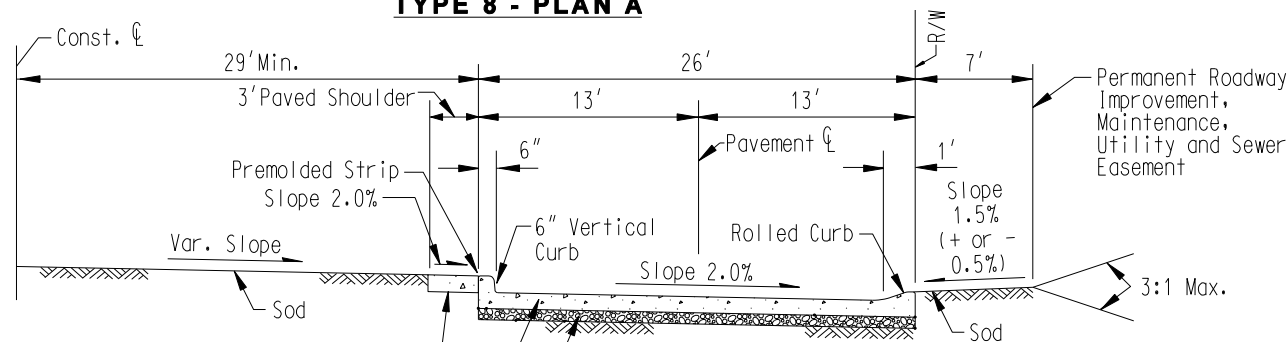
ST. LOUIS COUNTY PROJ.	
SHEET NUMBER	TOTAL SHEETS



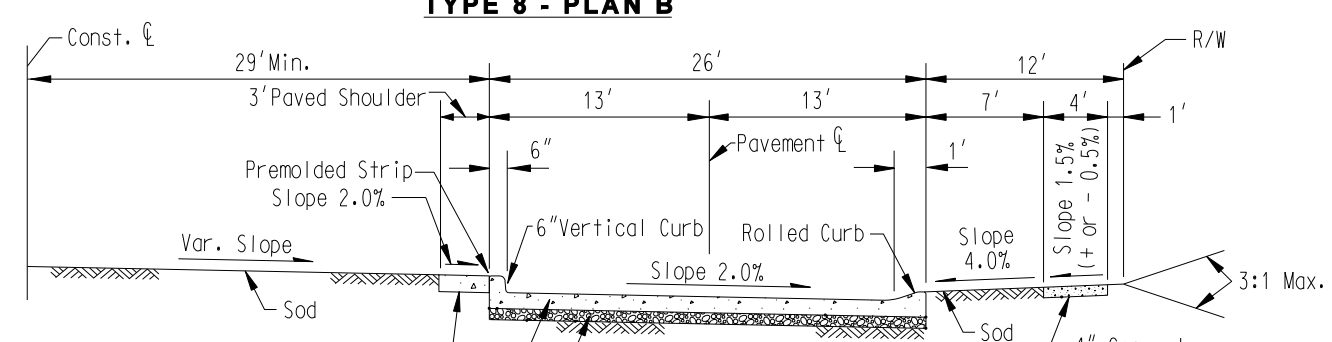
**TYPE 8 - PLAN A**



**TYPE 8 - PLAN B**



**SECTION A-A**



**SECTION B-B**

**GENERAL NOTES**

- 1) Do not scale drawing, follow dimensions.
- 2) For longitudinal and transverse joints, dowel and tie bar requirements and curb dimensions not shown refer to the "Pavement Construction Details." See Std. Dwgs. C502.01, C502.02 and C502.03.
- 3) All necessary pavement markings shall be as required by St. Louis County. For details refer to "Guidelines for Pavement Markings and Lane Striping". (See Standard Drawing C902.10)
- 4) Sidewalk thickness increases to 6" at residential driveways. (See Entrance Construction Details)
- 5) For roadway cross slopes, pavement types and thickness, refer to "Standard Typical Sections".
- 6) Curb ramps are required with sidewalk and curb. (See Standard Drawings C608.10, C608.11 & C608.12)
- 7) For commercial or industrial developments, refer to the "Non-Residential Pavement Construction Details". (See Standard Drawing C502.10)

SAINT LOUIS COUNTY DEPARTMENT OF HIGHWAYS AND TRAFFIC CLAYTON, MISSOURI	
PAVEMENT CONSTRUCTION DETAILS <b>RESIDENTIAL STREET, 55' RADIUS TURNAROUND, 55' RADIUS R-O-W W/7' ESMT. OR 67' RADIUS RIGHT-OF-WAY</b>	
REVISION DATE: <u>January 1, 2010</u>	
DRAWING C502.09	