

Winter 2006

ANIMAL CONTROL COMEDIAN

When he offered to be part of a film documentary for stand up comedians more than ten years ago, little did **JOE LANCEY**, Animal Control Officer, realize that his life as a part-time comedian was beginning. Joe was helping film professional comedians at Comedy Etc. in Fairview Heights, IL for a class he was taking at Southern Illinois University. They needed individuals to help do opening acts and he decided he would take a stab at it. He hasn't stopped since.

The County Connection recently had the opportunity to sit down with this popular comic to talk about his life as a part-time comedian and full-time Animal Control Officer.

County Connection (CC): How often do you do your comedy act?

Joe Lancey (JL): In the past couple of years, my personal life has gotten busier so I haven't been able to do it as much as I would like. Previously, I was doing it at least once, if not twice a week. I hope to get back on stage soon.

CC: Are there different types of comedians and if so, what type are you?

JL: There are different types of comedians. When I started, I was more of a "prop comedian" like the famous comedian Gallagher. I was using all sorts of props on stage. This type of comedy got old after time because



Joe Lancey on the job

you have to lug all of your props on stage with you each night. I would now be considered a stand-up comedian. I like this type of comedy more because I can tell a joke about almost anything.

CC: Where do you do your act?

JL: I have taken my act to the Funny Bone, Comedy Forum,

Laughs on the Landing and Jailhouse Rock, just to name a few.

CC: Who is your favorite audience?

JL: I would say that middle-aged men are probably the group that I feel most comfortable with because they are the same age group as me, so I relate to them easily. I usually try to scan the audience, though, before I go on stage so I can adapt my jokes to some of my audience.

CC: Do you have a favorite comedian?

JL: Robert Schimmel, George Carlin, and of course, the legendary Rodney Dangerfield.

CC: Along the same lines, do you have any role models?

JL: I would have to say George Carlin, not only for his comedy, but for his social commentary.

CC: If you could be a full-time comedian, would you?

JL: I would want to do comedic writing full-time if I could. Being a

full-time comedian and touring would be hard, especially having kids who are still at home.

CC: What is your favorite joke?

JL: Two guys are walking down a road and see a hole in the ground. One guy says to the other guy "wow that hole is really deep." They start tossing stuff down the hole to see just how deep it really is. They throw rocks and coins down the hole, but they decide they need something bigger, so they find a railroad tie and decide that will work and drop it down the hole.

All of a sudden, a black and white Billy Goat comes running out of the weeds. One of the men pushes the other out the way and says "wow, he almost knocked you down the hole!"

A farmer comes by and asks "did you fellows see a goat?"

See **Animal Control Comedian**

Page 3

In This Issue



Product Slogans:
Virginia Campbell
wins puzzler, pg.4



Did you hear:
Who set bowling
pins? pg. 7



**Department
Connections:** Get
the latest, pg 4



County Insider:
The Choices
Program, pg. 2



County Insider

Justice Services Choices Program

by Jean Hatley

Early in 1997 the idea for a substance abuse treatment program in the St. Louis County Jail came from **LARRY MOONEY**, a staff member in the County Executive's Office who is now a Missouri Court of Appeals Judge. The Department of Justice Services staff presented the concept to the County Circuit Court Judges. The judges strongly endorsed it because it gave them an alternative and intermediate sentencing option to sending individuals to the already overcrowded state prisons that offered limited opportunities for substance abuse treatment.

Department of Justice Services employee, **LILLIE HOPKINS** was assigned the task of creating and implementing the program. As Director of the St. Louis County Boot Camp, Ms. Hopkins had created and implemented Missouri's first certified drug treatment program in a jail setting. Ms. Hopkins served as both the Boot Camp Director and Program Manager for Justice Services' Inmate Program Department. Her decision to name the program "Choices" came about as a result of repeatedly hearing the Boot Camp staff tell the program participants over and over, "it's your choice. When you make the choice, be willing to accept the consequences

that come with your choices." For the first two years of the Choices Program, Ms. Hopkins managed what grew from a 60-day pre-trial program with 45 beds and 3 counselors to a 120-day program with 60 beds and 4 counselors.

In December of 2000, **JULIA CHILDREY** took over the management of Choices. During her tenure, the Department of Justice



Sherill Myers and Lori Hicks-Marr, Case Managers

Services closed the Boot Camp in 2001 and merged it with Choices. This merger brought new resources to the program. With 7 Case Managers and 1 Aftercare Coordinator, the program was allowed to expand to handle 105 participants. Under Ms. Childrey's management, Case Manager **JOE WEINRICH** developed a Concerned Persons session held on Saturdays in the Justice Center where family members could learn about the effects of addiction and co-dependency. Family sessions were also

introduced to prepare family members and the participant for life after incarceration. In addition, an Aftercare session on Monday evening was initiated to support the participants who were now dealing with life on the outside.

At the end of 2003, the program received what seemed like a fatal blow. Due to budget constraints, Choices was about to be closed, but a

recommendation from the Director of Justice Services, **ROY MUELLER**, plus a series of articles in a local major newspaper by a well known columnist and several testimonials from former Choices participants persuaded the County Council and County Executive

CHARLIE DOOLEY to retain the program. The program was reinstated with 2 Case Managers and a 30-bed capacity. Even though Mr. Weinrich had been downsized, he believed so much in the program that he continued on as a volunteer with Aftercare.

In July of 2004 a grant from the Missouri Department of Public Safety expanded the program to 3 Case Managers and 1 part time Case Manager with 15 more beds. Joe Weinrich was then hired part-time to continue his

work with Concerned Persons, Family Sessions and Aftercare.

The program, now in its ninth year, is a 90-day psycho-educational treatment program that incorporates the 12-step recovery program. At the present time, it is available to 30 male inmates and 15 female inmates. New groups of clients are accepted four times each year.

At the end of each year of the program, a university professor conducts an evaluation of the program in cooperation with staff from Choices, DJS, and the regional offices of the Missouri State Board of Probation and Parole. The outcomes suggest that Choices Programs has given inmates the chance to break the cycle and downward spiral of abuse and addiction. Among clients who successfully completed the program and were released in the sixth year, 71% were not arrested in the first year back in the community. Overall, 83% of the clients released in the first through sixth years have been successful on probation.

What is it like to be a participant in the Choices program? Participants attend group sessions and classes that cover substance abuse education and relapse prevention. The participants are required to attend 12-step programs, aftercare planning, and the women attend a women's recovery group. Participants also receive individual and family counseling. Those without a high school diploma are required to attend GED classes. Participants are required to complete a personal journal, workbooks with homework assignments,

a job application, life skills classes, anger management classes, and four written tests over the program content. In addition, a non-mandatory stress management class is presented by volunteers. Inspirational and informational guest speakers and past members of Choices are brought in to speak to the participants.

At the end of the 90-day session everything culminates in a memorable graduation day. Julia Childrey says that witnessing a participant progress from a low point with a complete rejection of all authority to a level of stability that others thought impossible is a real joy. As one former Case Manager believes, "the Choices staff really hopes to inspire changes that are life-altering. We want them to make the choice to change."

According to Case Manager **LORI HICKS-MARR**, "it's never too late to change." One of her clients, Patty, was a 30-year drug user. Choices was the last chance to get her life on track. Patty worked hard in the program. She graduated and began attending Choices Aftercare and AA meetings. She rode the bus for several hours just to attend one meeting. She was tempted with drugs on several occasions, but she didn't want to disappoint her children or herself. She is now working for Project REACH (Re-entry Employment Assistance Counseling Housing). Patty has a new lease on life.

A client of Case Manager **SHERRILL MYERS** had used drugs for 33 years and did not believe he was an addict. He strongly resisted entering the Choices program. His marriage was falling apart,

and he feared losing his family, but he still would not face the ultimate truth. Somewhere in the midst of his 90-day stay with Choices, reality set in, and he saw the damage he had caused his family. By the time he graduated, he knew what he needed to do. This man is a college graduate and a skilled tradesman, and today he is clean and sober and teaches Industrial Arts at a local college.

These are just a couple of many success stories, but a letter sent to us by a mother of one of the Choices participants says it all. Her son had a shot at a successful career as a professional hockey player, but an unfortunate accident on the ice sidelined his dream and sent him into a spiral of substance abuse. The letter reads, "Mr. **CRAIG MORRIS** did a superb job as Brian's counselor. He knew Brian inside and out by the time Brian left the program. He was hard on him when he needed to be. I saw him sacrifice much of his own time. I saw him go way beyond his duties to help those in the program. He is such an asset to the "Brians" of the world and to the Choices program. You gave me back my son as I once knew him." This can be said about all of the Case Managers in Choices. They go way beyond their duties to help others. They care.

From August 1998 through November 2006, the Choices Program has served 1,819 participants. Programs such as Choices can enhance public safety by reducing new criminal activities and helping those individuals who might not otherwise receive treatment to rebuild their lives and make a positive contribution to society.



The Department of Revenue's Business Personal Property Section helped ensure the Cardinal's success. More than \$1,300 was raised Countywide with the Cardinal Dress Down Days.

Animal Control Comedian from page 1

"Yeah, he almost knocked us down the hole," said one of the men.

The farmer says, "It couldn't have been the Billy Goat. He was chained to a Railroad Tie!"

CC: Have you ever pulled any funny jokes on your friends?

JL: I had been laid off from a job and had taken a job with a donut company. My job was to pick up the stale donuts from various convenient stores at the end of the night before the new donuts were delivered. After picking them up, I would drive by my friend's house and throw them in his driveway. One time, to change it up, I filled his mailbox full of the jelly donuts. He and his wife had no idea it was me. I decided to quit this job but on my last night, I decided I was going to fill his driveway full of donuts. His wife decided to call the owner of the company to complain. She finally found out it was me and decided not to complain. We still laugh about it!

CC: Do you have any memorable on-stage moments?

JL: Probably one of the most memorable moments was when I was on stage for the second or third time. My act can get kind of dirty at times. I noticed I wasn't getting too many laughs during my act. I was kind of frustrated after it was over. What I didn't realize was that there was a church group in the audience the whole time!

CC: Do you incorporate your comedy into your job?

JL: Being an Animal Control Officer, sometimes I have to diffuse nasty situations with humor. I tend to be the person who lightens up the situation by telling jokes to co-workers.

CC: What is the best part of being a comedian?

JL: Making people laugh is such a satisfying feeling. Sometimes a groan can be just as good as a laugh!

CC: Do you have any advice for an up and coming comedian?

JL: Stick with it and don't quit.

CC: Where can we find you on stage and when?

JL: I hope to be booking acts soon in Trenton, St. James at Laughs on the Landing and Comedy Forum.



Virginia Campbell Wins Puzzler



Virginia Campbell (Police), a Warrants Clerk located in the Buzz Westfall Justice Center, was pleased to have won the puzzler. The photo above is not posed - it shows her candid reaction to the announcement she had won. Virginia enjoys the puzzlers and often flips each issue to the back before reading the rest. She plans to use her Schnucks gift certificate

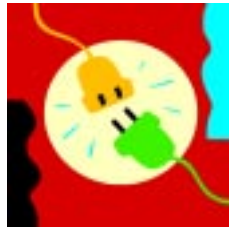


An employee poem

VETERANS
LINDA STUTZ (Admin)

Here's to all the veterans,
Living and dead.
All with different stories.
To be told and read.

Because of these people,
Freedom is way ahead.
We're very proud of them,
All heroes and heroine all
home-bread.



Department Connections

Police

Sergeant **BARRY ARMFIELD**, Division of Special Operations, received the "Crisis Team Intervention Coordinator of the Year" Award at the Second Annual National Conference on Crisis Intervention Teams (CIT). After receiving his own training in St. Louis' inaugural CIT Training Course in 2003, Sergeant Armfield was assigned as coordinator for the program. Since 2003, he has coordinated twelve 40-hour training courses, graduating over 600 CIT officers from 38 jurisdictions.

Planning

KARA LUBISCHER received the Lemay Chamber of Commerce's 2006 "Above and Beyond" Award for her active participation in the Lemay community. Kara created resources beneficial to the residents of Lemay, including the **DIRECT** newsletter, the Subdivision Trustee Resource Guidebook, Lemay Clean-up, the West of Broadway Focus Area and the Lemay Chamber Housing Committee. Kara is the Department of Planning's liaison to the Lemay community. The Department of Planning congratulates Kara on her well-deserved honor.

Highways & Traffic / Public Works

Public Works' Sewer Lateral and Water Service Line programs received Four-Star reviews in customer service surveys distributed earlier

this year. Ninety-two percent of all sewer lateral repair program survey responders and 88 percent of surveyed water line program customers rated their overall experience with the respective programs as "excellent" or "above average." Program officials were very pleased with the high marks. "We wanted to make sure we were doing our job, and [the survey results] tell us we're successful in our mission of providing a needed service of value to the residents of St. Louis County," observed **STEVE RENNEKAMP**, who manages both programs. "We're meeting expectations." For a nominal assessment (\$12 a year for the water sewer lateral program), the programs

dramatically reduce the expense of repairing county homeowners' water mains and sewer laterals. Both are part of PW's Division of Neighborhood Services. As of early November, 738 property owners had benefited in 2006 from the Sewer Lateral program, and 1,364 from the Water Service Line program.

Also on the subject of Sewer Lateral repair, a satisfied customer recently sent along the following note of appreciation for **KENNETH PLEIMANN, JR.**, the program's construction contracts administrator. "I wanted to send you this letter to compliment Mr. Pleimann, Jr. I recently was involved in a lateral sewer line repair job, and Kenneth

was very professional, very patient and very friendly in answering all of my questions and concerns. It's nice to experience someone who really cares about their job and has pride and interest in making their department look good. Ken is a real asset to the image and professionalism of your department."

Operation & Construction 14th Blood Drive - Blood donors from Construction and Operation Districts gave a



Jim Wright donating blood.

pint to help save lives. Since 2001 the Highways and Traffic Blood Drive has served the community by offering a convenient site for our Department's field personnel to efficiently donate blood during working hours. Of 41 attempts, our goal of 40 pints was not only met, but was exceeded. We collected 44 productive units (36 normal and 4 double-red) of blood. This record setting amount was due in part to a new method, called "Double Red Cells" which is a collection of just the reds cells. If qualified for this method by blood type, certain donors were able to use this process, which is the equivalent of two pints of blood. We had four individuals participate in this process. This blood drive

also featured 5 first time donors. Pizza from Domino's and Bella Pizza & Subs was served and donors received a Red Cross T-shirt. Attendance prizes (watermelons) were awarded to **MIKE COVINGTON** (Dist. 5), **SHERRI RAUCH** (Dist. 4), **CORNELIUS WARD** (Dist. 1) and **DEMARCO BOLTON** (Dist. 2). Thank you, for helping life flow through our community. Donating Blood saves lives. It's simple and that important.

St. Louis County Government is continuing its mission to minimize traffic flow pains expected to materialize once the Missouri Department of Transportation begins rebuilding a 12-mile stretch of I-64/40 through the heart of St. Louis County next spring. Highways and Traffic personnel are the support staff nucleus for the I-64 Connection Sub-Committee. This group of municipal officials was formed at the request of County Executive **CHARLIE A. DOOLEY** and MoDOT to develop traffic management strategies to ensure that project-diverted vehicles will flow as quickly as possible through all alternate routes. "It's a matter of not what we do but what we don't do that could harm us," explained H&T Director **GARRY W. EARLS**. "We're going to have to link arms as a community to get this done, but it CAN be done. It's our responsibility to make sure we look at every possible measure to get the community through this. " Highways and Traffic's Earls, **PAT PALMER**, **RICH BECKMAN**, **MARK JAEGER** and **DAVID WRONE** are performing a variety of support function roles for the committee.

Health

Awards and professional honors were presented to several Department of Health staff recently. Department Director Dr. **DOLORES J. GUNN** received the Health



Elizabeth Gibbs and Mike Williams with their Public Health Awards, presented by the Bi-State Infectious Disease Conference.

Care Heroes Community Outreach Award from the St. Louis Business Journal. The publication described Gunn as "a persuasive advocate for community involvement to promote better health for everyone, especially children." Dr. **MICHAEL WILLIAMS**, director of the Division of Communicable Disease Control and Emergency Preparedness, and **ELIZABETH GIBBS**, an epidemiology specialist, both received Public Health Awards from the Bi-State Infectious Disease Conference. The group includes infectious disease control professionals and public health staff from Missouri and Illinois. Williams was cited for his efforts during the July power outage and his overall partnerships and collaborations with other public health departments, corporations and hospitals. Gibbs received her award for her activities while she was

employed by the St. Louis City Department of Health. Gibbs was cited for her efforts to deal with a staph infection at a job training organization. Her activities included an education campaign to reduce the number of staph infections.

Director's Awards for "Outstanding Customer Service" were presented to six Health Department employees. DOH employees nominated co-workers for the awards that are based on providing excellent customer service to the public and county employees. Receiving awards were: **CRYSTAL CLUBBS**, accounts payable supervisor; **VELDA JAMISON**, office supervisor; **PAT KROEPEL**, office supervisor; **SHARON KOWALCZYK**, Office supervisor, **SUE MROZWICZ**, administrative assistant, and **KITTY TOOMBS**, grants and contract administrator.

Having fun at work is a recurring theme at South County Health Center. This summer, employees covered two walls in the administration area with a



Betty Breen and Nina Berry, both registered nurses, in front of the garden.

"garden of flowers." Each employee decorated their "garden" with snapshots, cutouts, and drawings of family, hobbies, and anything important to them.

DENISE STREHLOW, public health consultant for the department, was elected President-Elect of the Missouri Public Health Association (2006-2007).

Human Services

Attention 2007 County Government Retirees (and friends/relatives of retirees): Do you like numbers - maybe you have been an accountant, bookkeeper, or are just good with math? Are you detail oriented and think you would like working with older adults? If you answered "yes" to all of these questions, involvement with the CORP Income Tax Program may be a good fit for you. CORP, or County Older Resident Programs, is a division of the Saint Louis County Department of Human Services. Volunteers are needed at the North County Government Center in Hazelwood to answer phone and set appointments for assistance with federal and state tax forms.

Volunteers also are needed to assist with preparation of the Missouri Property Tax Credit, State and Federal forms at North County locations, including Hazelwood and Dellwood. Volunteers also are needed to make home visits. If interested, please contact **ELLEN SHERMAN** at 314-615-4559.



Welcome

Rena Ahrens (P&R)
 Stephen L. Arnold (JS)
 Maragaret Astroth (PW)
 Angela Avellone (HS)
 Terrence Bennett (P&R)
 Joan Birchler (DOH)
 Carolyn Brown (HS)
 Dominic J. Cogshell (JS)
 Derek Collins (HS)
 James Conant (HS)
 Matthew Conway (PW)
 Sharon Cox (Rev)
 Jerome Crane, Sr. (H&T)
 Jared David (PW)
 Shanee' M. Davis (JS)
 Steve Earl, Jr. (H&T)
 Lowry Finley (P&R)
 Tracy Fritz (DOH)
 Nathan R. Hartzler (JS)
 Antanas Herring (H&T)
 Garry Hodges (P&R)
 Randy Johnston (H&T)
 Adarin J. Jones (JS)
 Amanda L. Kampman (JS)
 Barbara Kasten (P&R)
 Deborah Keiser (P&R)
 Robert Koch (Rev)
 Debra Kricensky (PW)

LaVerne Kroenung (Plng)
 Robert Lewis (Rev)
 Susan M. Mann (JS)
 Christina Marty (Pros Atty)
 Patrick McHugh (H&T)
 Daniel McWilliams (Rev)
 Justin M. Mohler (JS)
 Andrea Norton (Rev)
 Eleanor Peters (DOH)
 Erica D. Pittmann (JS)
 John Reed (H&T)
 Elizabeth Rehm (PW)
 Tamara Remez (Rev)
 Cyndy Santoro (Rev)
 Vencent Sanvi (H&T)
 Donald Schlingman (PW)
 Sheila Simmons (Jud Admin)
 Michael Simon (H&T)
 Robert Smith (Rev)
 Adam Spector (H&T)
 Joseph Steward (Jud Admin)
 Doris Vasques (Rev)
 Michael Vitale (Jud Admin)
 Jody Wilkins (DOH)
 Marcin Zajac (JS)



Promotions

Anne Agne (P&R) - Accountant I
 Timothy Bean (PW) - Structural Specialist
 Evelyn Bush (Plng) - Offices Services Specialist
 Julia Childrey (JS) - Unit Manager 8th Floor
 Richard Edwards, Jr. (PW) - Office Services Coordinator
 Mary Gibbs (H&T) - Maintenance Driver II
 Jeff Hall (Rev) - Commercial Appraiser
 August Heck, Jr. (H&T) - Engineer III
 Tena Johnson (JS) - Program Manager of Intake
 Martin Koeller (H&T) - Signal Supervisor
 Gerald Korhammer (PW) - Building Systems Specialist
 Moses Medley (H&T) - Maintenance Driver II
 Susan Moody (Rev) - Commercial Appraiser
 Gary Nichols (PW) - Building Systems Foreman
 Chad Noles (H&T) - Maintenance Driver II
 Jennifer Phillips (DOH) - Air Emission Specialist
 Ken Reed (JS) - Unit Manager Intake Service Center
 Steve Robertson (Rev) - Commercial Appraiser Supervisor
 Brian Schaffer (P&R) - Recreation Complex Manager
 Carol Semar (Rev) - Office Services Specialist
 Jennifer Western (DOH) - Supervisor, Laboratory



Retirements

George Basler (Police)
 31+ yrs
 Carolyn Bledsoe (DOH)
 24+ yrs
 Steven Brown (P&R)
 27+ yrs
 Billie Carter (Police)
 10 yrs
 Shirley Doht (Rev)
 11+ yrs
 Edward Earll (PW)
 28+ yrs
 Charles Eden (Police)
 20 yrs
 Claude Estes (H&T)
 32+ yrs
 Patricia Ferrell (DHS)
 10+ yrs
 Larry Fox (Police)
 27+ yrs
 Donald Giraud (Police)
 27+ yrs
 David Gocken (Fam Ct)
 25+ yrs

Margaret Gold (Fam Ct)
 32+ yrs
 Mike Grace (Admin)
 xx+ yrs
 Henry Howard (H&T)
 30+ yrs
 John Kaufman (Police)
 32+ yrs
 Robert Lee (PW)
 21+ yrs
 Ralph Lefarth (DOH)
 7+ yrs
 Barbara Lewis (DOH)
 9+ yrs
 Linda McCarty (H&T)
 19+ yrs
 Henry Mendoza (Muni Ct)
 26+ yrs
 Thomas Pierce (Police)
 36+ yrs
 Mark Reinhardt (H&T)
 24+ yrs
 Donald Richter (P&R)
 27+ yrs
 Murrel Waters (P&R)
 15+ yrs
 Helen Zercher (Fam Ct)
 24+ yrs



New Arrivals

BILL GOVERO (Police) and his wife, Linda, had a baby boy, Benjamin Frederick, born on August 25, 2006.

ED CRENSHAW (Police) and his wife, Christol, had a baby girl, Christyn Monique, born on August 25, 2006.

BRANDT WATHEN (Police) and his wife, Michaelanne, had a baby boy, Wyatt Richard, born on August 28, 2006.

MELISSA DOSS (Police) and her husband, David, had a baby girl, Ashley Nicole, born on September 27, 2006.



Did you hear?

What's the most unusual job you've ever had?

Coming in the next issue: What's the best surprise you've ever had?

DICK HRABKO, Director of Aviation at Spirit Airport said he held his most unusual job while he was in high school. He worked for a pet store that raised rats and mice and provided them to an experimental laboratory. Dick cleaned out mice, rat, monkey and birdcages. He said he had to wear gloves because the rats were mean and would occasionally bite while their cages were being cleaned out.



Dick Hrabko and John Bales

Dick was also a pinsetter in a bowling alley. He said it was a really dangerous position because the pins would fly up and he would

have to drop them back into the pinsetter.

JOHN BALES, Deputy Director of Aviation at Spirit Airport states:

“Besides this one? The first dollar I ever earned was from digging potatoes. I was eight years old and was sold on the idea because I was going to ride on the back of a tractor and dig in the dirt. My parents were raised in the depression and thought it was great that I wanted to work and earn money. The farmer was thrilled because he only had to pay a dollar a piece to five neighborhood brats who filled his wagon with potatoes. We all came out ahead and luckily I improved my negotiating skills.

Currently, I occasionally earn money from my boss playing golf on weekends.”



Customer Service Help

How can you find out where to direct customers when you receive a question you can't answer directly? Did you know there is a searchable customer service database available on the intranet?

Just go to the intranet home page and select the *Customer Service Phone Numbers* option near the upper left-hand corner directly below *Staff Directory*. From there you can search by Service, Department/Facility or KeyWords.

For instance, enter “birth certificates” in the KeyWords field and the results provided will supply phone numbers, locations, etc. Partial words like using just the word “birth” will provide best results. If you can't find something or if you would like to add a number, contact STEPHANIE GREENE at 314-615-0105 from the Customer Service Division.



For the past 11 years, hundreds of Saint Louis County Government employees in dozens of different departments and divisions have taken the lead to provide food, clothing, toys, household items, rent and utility payments for nearly 1,200 needy county families during the Holidays.

Each year, county employees are joined by private business and faith-based groups to make this worthwhile effort a success. Visit <http://www.stlouisco.com/dhs/adoptfamilyproject/> for more information.



Visit The
County
Connection
online



Holiday Decoder

Submit your decoded message to the Division of Personnel by December 8th for a chance at a prize.

Name: _____

Department: _____

a b c d e f g h i j k l m n o p q r s t u v w x y z
5 14 2 13 3 8 7 22 16 12 24 11 9 15 6 17 20 1 23 26 4 25 10 18 19 21

1. 2•5•15•13•11•3 _____•_____•_____•_____•_____•_____
2. 3•7•7•15•6•7 _____•_____•_____•_____•_____•_____
3. 23•5•15•26•25 _____•_____•_____•_____•_____
4. 11•16•7•22•26•23 _____•_____•_____•_____•_____•_____
5. 26•16•15•23•3•11 _____•_____•_____•_____•_____•_____
6. 2•6•6•24•16•3•23 _____•_____•_____•_____•_____•_____•_____
7. 1•4•13•6•11•17•22 _____•_____•_____•_____•_____•_____•_____
8. 3•11•8 _____•_____•_____
9. 2•5•15•3 _____•_____•_____•_____
10. 11•3•26•26•3•1•23 _____•_____•_____•_____•_____•_____•_____
11. 15•6•1•26•22 _____•_____•_____•_____•_____
12. 26•1•3•3 _____•_____•_____•_____
13. 26•6•19•23 _____•_____•_____•_____
14. 2•11•5•4•23 _____•_____•_____•_____•_____
15. 23•5•2•24 _____•_____•_____•_____
16. 23•15•6•10 _____•_____•_____•_____
17. 22•6•11•11•19 _____•_____•_____•_____•_____
18. 17•6•11•5•1 _____•_____•_____•_____•_____
19. 16•7•11•6•6 _____•_____•_____•_____•_____
20. 23•16•15•7•16•15•7 _____•_____•_____•_____•_____•_____•_____

© Newsword.com

Contributing Editors

Debbie Armstrong

Donna Boeger

Gail Choate

Cindy Davies

Rick Eckhard

Laura Ehredt

Stephanie Greene

Jean Hatley

Sue Hendricks

Rich Holesinger

Jeannette Hook

Teejay Jeademann

Rich Lintz

Connie McClure

John Shelton

David Wrone

Thanks to everyone for another great issue!

Kathy Eller
&

Fannie Lindo

PRODUCT SLOGAN SOLUTIONS

1. Just Slightly Ahead Of Our Time
Panasonic
2. King Of Beers
Budweiser
3. Leave The Driving To Us
Greyhound
4. Loneliest Repairman
Maytag
5. Long Lasting Freshness
Big Red
6. Melts In Your Mouth, Not In Your Hands
M&Ms
7. MFP Fluoride
Colgate
8. Music To Your Mouth
Nestle Crunch
9. Never Had It. Never Will.
7-Up
10. Nighttime Sniffing, Sneezing, Coughing, Aching,
Stuffy Head, Fever So You Can Rest Medicine
Nyquil