

Utilities

In St. Louis County, water, natural gas and electricity are all provided primarily by private companies, with only two of the County's 91 cities providing any municipal utilities. Sewer service is provided by the Metropolitan St. Louis Sewer District, a special-purpose district serving St. Louis City and most of St. Louis County.

- Gas Service 65
- Water Resources 66
- Electrical Service 67
- Metropolitan Sewer District..... 69
- Sewer District Boundaries..... 70

Internet resources on reverse.

Internet Resources

AmerenUE

www.ameren.com

Laclede Gas Company

www.lacledegas.com

Metropolitan St. Louis Sewer District

www.msd.st-louis.mo.us

Missouri-American Water Company

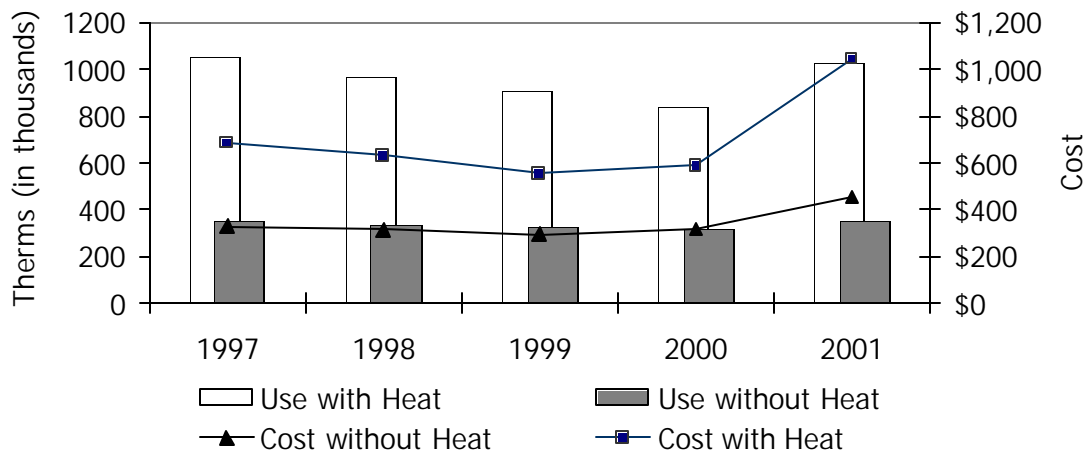
www.mawc.com

Utilities

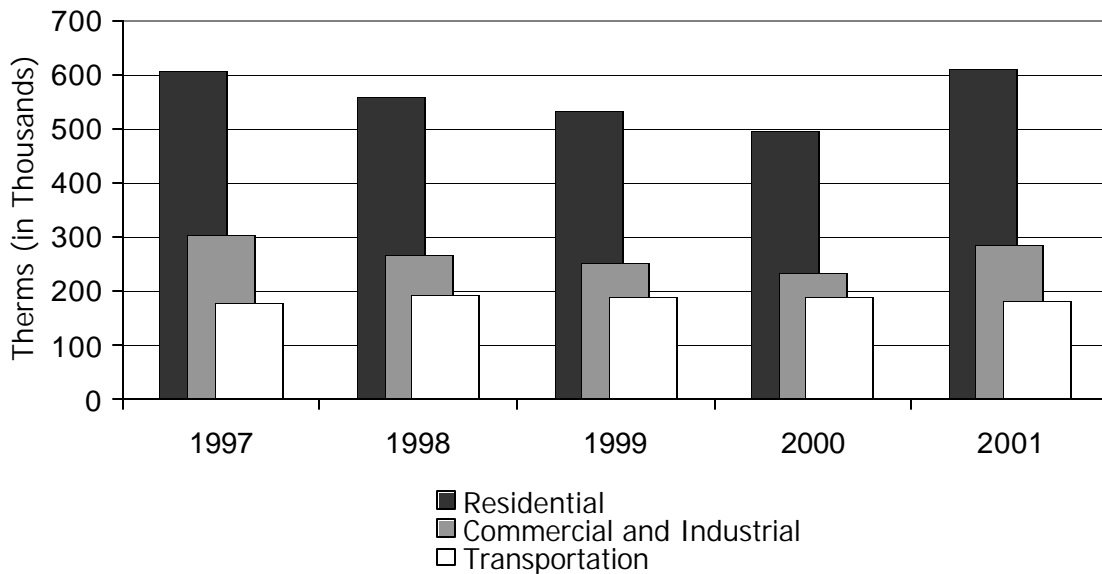
Gas Service

Laclede Gas Company is the largest natural gas distribution utility in Missouri, serving more than 630,000 residential, commercial and industrial customers in St. Louis and surrounding counties of eastern Missouri.

Natural gas utilized in the St. Louis area originates from Mid-Continent and Gulf Coast sources and is purchased by Laclede from 40 different suppliers. In addition to pipeline infrastructure, Laclede has natural gas and propane storage facilities in north St. Louis County.



Average Annual Residential Use and Cost, 1997-2001



Laclede Gas Company Annual Sales, 1997-2001

Source: The Laclede Group, 2001 Annual Report.

Water Resources

Missouri-American Water Company

Missouri-American Water Company supplied water to 355,000 customers (households and businesses) annually as of December 2001. The cost and quality of the public water utility service are regulated by:

- Missouri Public Service Commission
- Missouri Department of Natural Resources
- St. Louis County Department of Health

The following rates apply to consumption for manufacturing purposes as of June 1, 2001:

- First 60,000 cubic feet or less per month-\$452.04.
- Over 60,000 cubic feet per month-\$0.75/100 c.f.

Municipal Water Companies

Company	Source	Plant Capacity	Average Consumption (Month of August)	Percent Capacity
Eureka	3 wells	3,774,000 gallons daily	2,322,000 gallons daily	62%
Kirkwood	4 wells, Meramec River, & auxiliary supply from Missouri-American Water Company	7,000,000 gallons daily	5,000,000 gallons daily	71%

Note: Former municipal water providers, Florissant, Valley Park and Webster Groves, now depend on the Missouri-American Water Company for their public water.

Sources: Missouri-American Water Company, City of Kirkwood and City of Eureka, 2002.

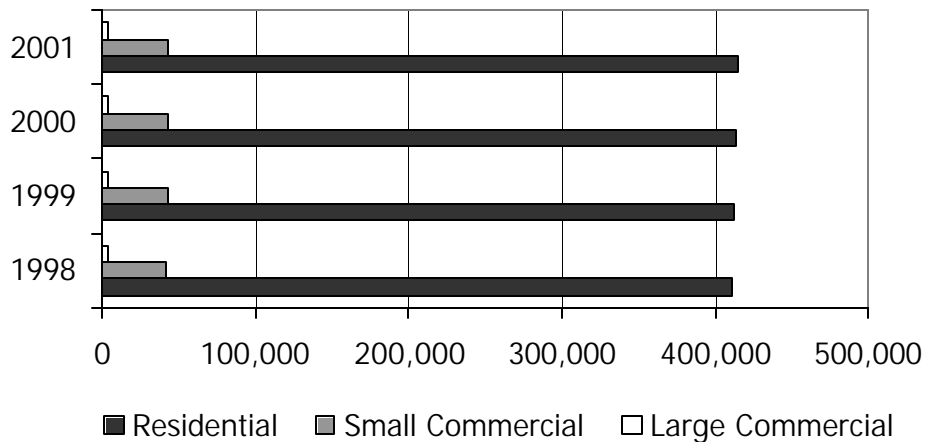
Electrical Service

Ameren Union Electric (UE) provides electricity to residents, businesses and institutions in St. Louis County. The company's St. Louis-based parent corporation, Ameren, provides energy services to electric and natural gas customers in Missouri and

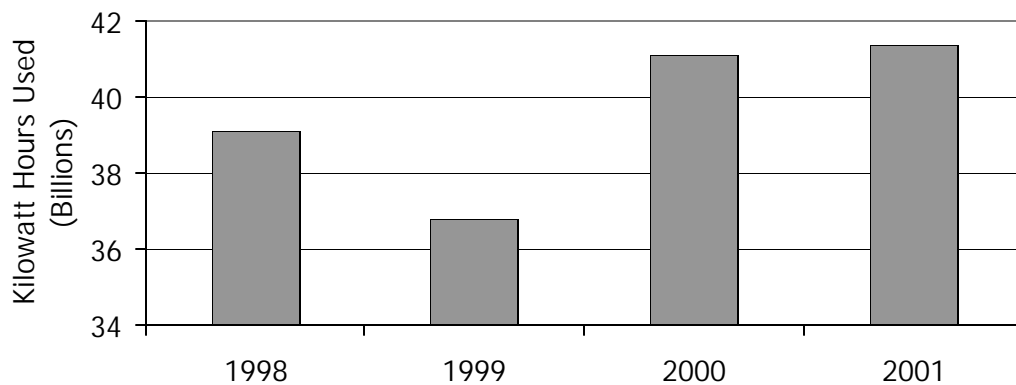
Illinois through its operating companies, AmerenUE and AmerenCIPS. Another St. Louis-based affiliate, AmerenEnergy, provides energy services nationwide.

St. Louis County Customers

Year	Residential	Small Commercial	Large Commercial and Industrial
1998	410,679	41,381	4,028
1999	412,028	42,356	4,066
2000	413,775	43,042	4,196
2001	414,220	43,449	4,249



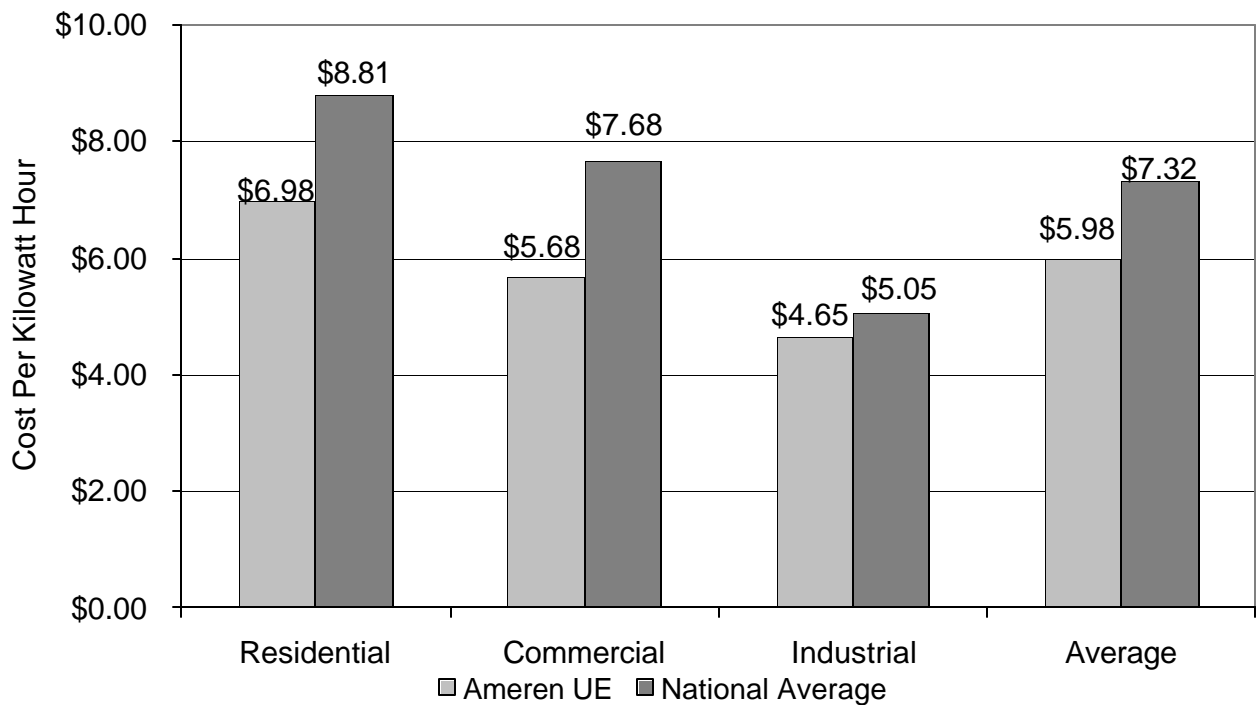
Number of St. Louis County Customers, 1998-2001



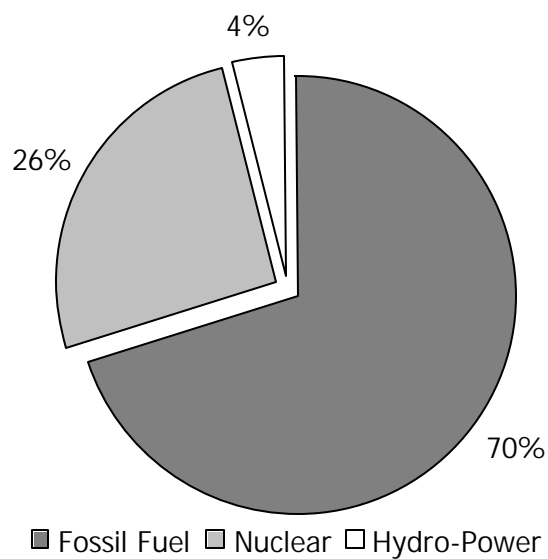
Electrical Energy Consumption, St. Louis County

Source: AmerenUE, 2002.

Electrical Service, continued



Electrical Energy Rates, 2002



Electrical Energy Sources, AmerenUE 2002

Source: AmerenUE, 2002.

Metropolitan Sewer District

The Metropolitan St. Louis Sewer District (MSD) was created in 1954 by the voters of St. Louis County and City. It began full operation in 1956. The District is a special service district, created under the Missouri Constitution (Section 30, Article VI). It is responsible for all sewage collection and treatment as well as stormwater drainage in a 524 square-mile area. (Extreme western parts of St. Louis County are not in MSD's boundaries.) MSD serves approximately 413,411 single family, multi-family, business and industrial accounts and a population of approximately 1.3 million.

The District's revenues come from user fees and real and personal property taxes. Rather than the original flat rate user fee for residential

customers, today's customers pay user fees based on water usage (where meters are available) just like industrial and business customers. Unmetered customers receive a wastewater user charge based on a formula that uses housing characteristics.

The District's Plan (charter) was unchanged from 1954 until November, 2000, when voters approved amendments updating MSD's procedures and improving its operations. One important amendment established an independent 15-member Rate Commission. This commission reviews adjustments to the District's user charges before they are brought before the Board of Trustees. Rate Commissioners represent a variety of organizations and serve staggered terms.

MSD Sewage Treatment Facilities

Plant	Type of Treatment	Level of Treatment	Average Flow (Millions of Gallons/Day)	
			Design Capacity	Flow 2001-02
Mississippi River Basin				
Bissell Point	Mechanical	Secondary	150	122.6
Lemay	Mechanical	Secondary	167	119.9
Meramec River Basin				
Grand Glaize	Mechanical	Secondary	16	16.8
Fenton	Mechanical	Secondary	3.75	5.2
Baumgartner	Lagoon	Secondary	4	7.0
Meramec	Lagoon	Secondary	4	3.9
Missouri River Basin				
Coldwater Creek	Mechanical	Secondary	40	28.9
Missouri River	Mechanical	Secondary	28	29.2

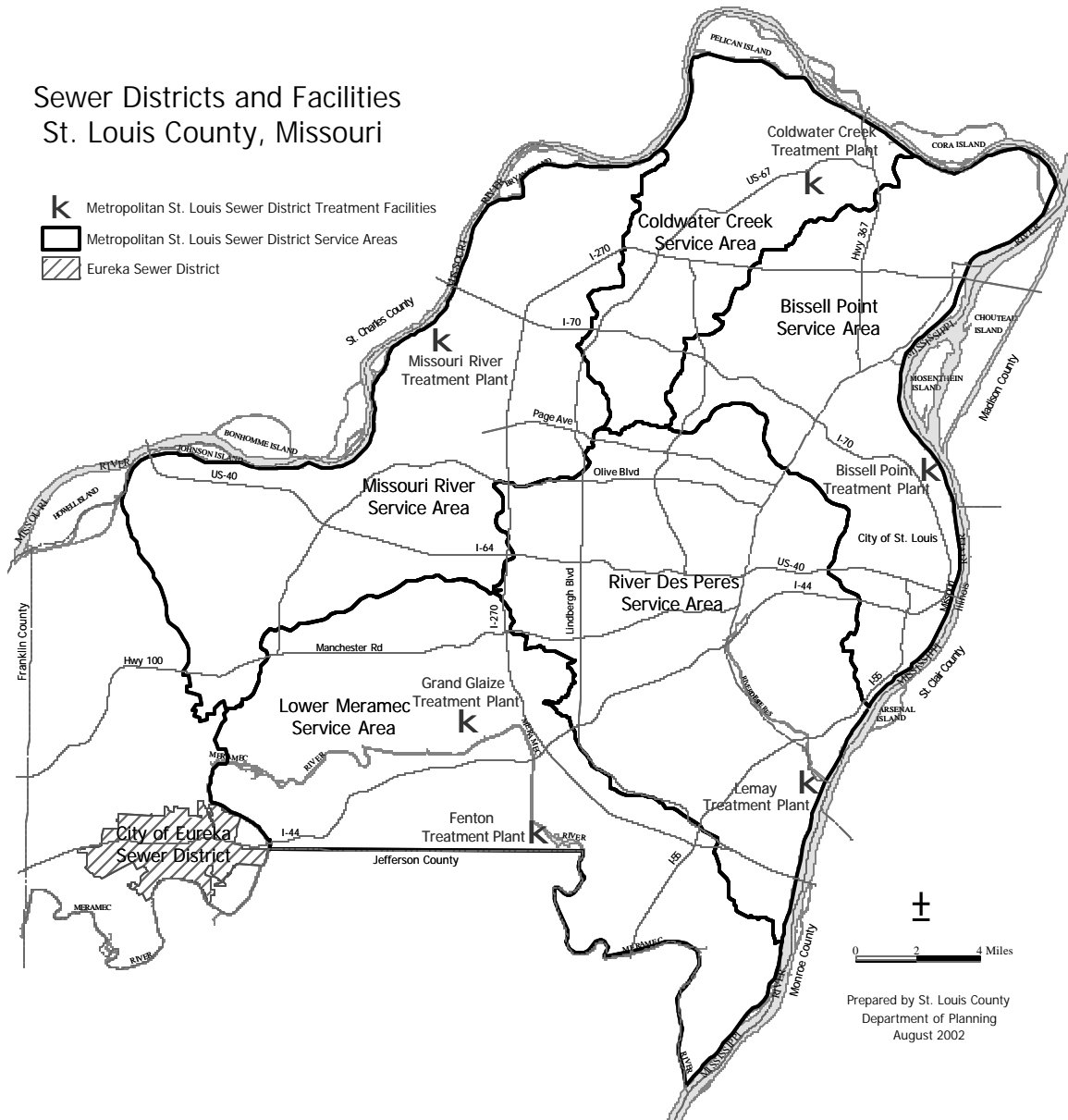
Source: Metropolitan St. Louis Sewer District, 2002.

Sewer District Boundaries

The only public sewage system outside the Metropolitan Sewer District area in St. Louis County is maintained by the City of Eureka, which operates a secondary level lagoon and mechanical sewage treatment facility. Eureka's plant has a design capacity of 1 million gallons per day and is currently operating at 95 percent of the plant's capacity. Eureka has approved a new treatment facility, and completion is scheduled for the

summer of 2003. The new facility will increase the city's capacity to 2.8 million gallons per day. In areas west of Highway 109, which are outside of MSD and the City of Eureka, sewage treatment and wastewater disposal in St. Louis County are scattered and incomplete, consisting of subdivision lagoons, septic tanks and the mechanical plants or lagoons belonging to rural schools, institutions, factories and industrial parks.

Sewer Districts and Facilities
St. Louis County, Missouri



Prepared by St. Louis County
Department of Planning
August 2002

Sources: City of Eureka, Public Works Department, 2002 and Metropolitan St. Louis Sewer District, 2002.