

ST. LOUIS COUNTY PLANNING COMMISSION
MONDAY February 23, 2009 – 7:00 P.M.
41 S. CENTRAL, CLAYTON, MO 63105
COUNTY COUNCIL CHAMBERS

PET. NO.	PETITIONER	REQUEST	APPROXIMATE LOCATION	COUNCIL DISTRICT	SCHOOL DISTRICT	NO. OF ACRES
03-09	Kruse Florist, Inc.	Amended C-8	South corner of Lemay Ferry Road and Mehview Court.	6	Mehlville	1.2
04-09	Reed Low and Mark Woodruff	R-2 to C-2	West side of Lemay Ferry Road at Barbagallo Drive approximately 350 feet north of Butler Hill Road.	6	Mehlville	1.4

The Public Hearing Notice may be viewed on the Internet at:

<http://www.stlouisco.com>

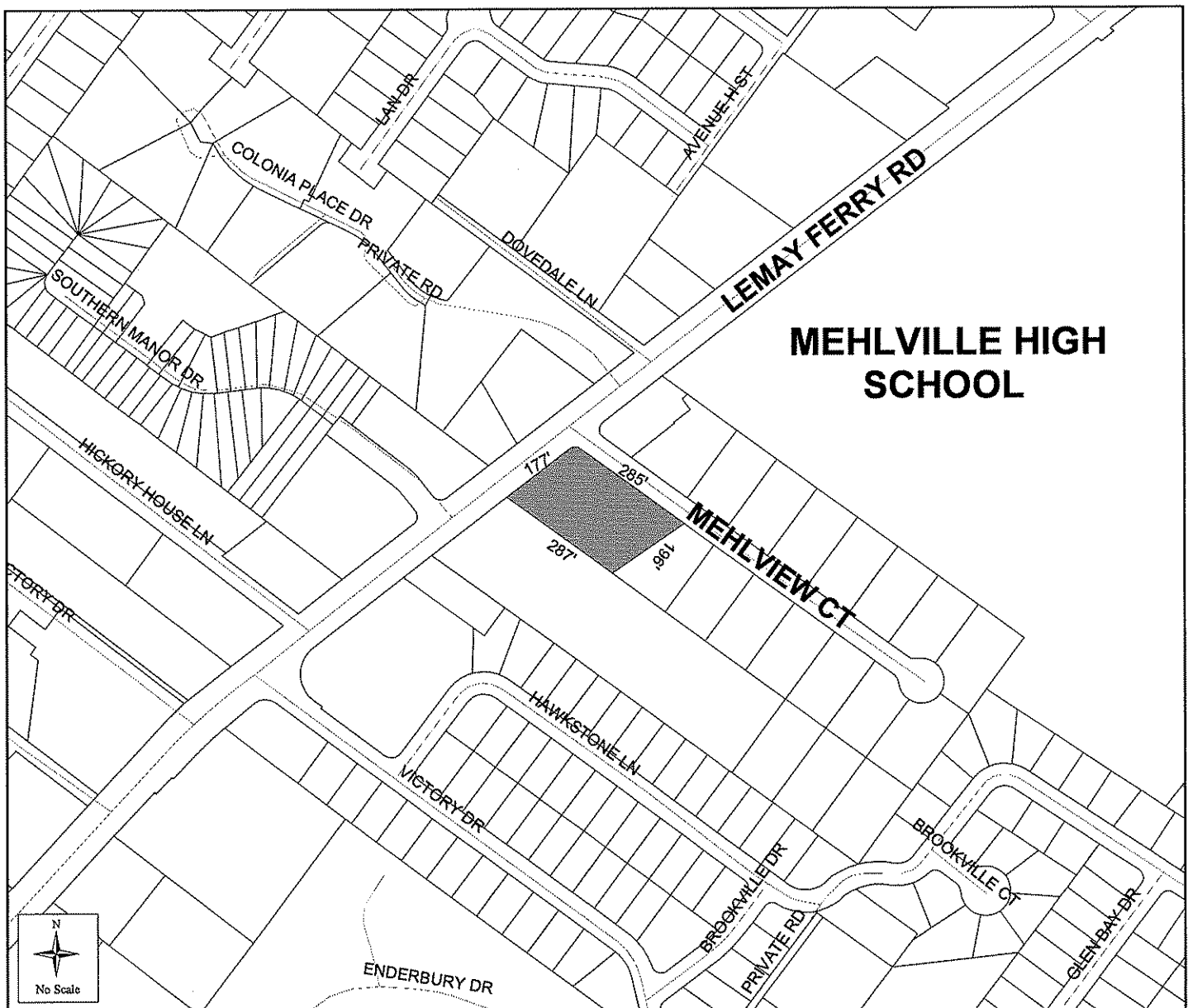
or you may send comments via E-Mail to the Planning Commission c/o Gail Choate at:

gchoate@stlouisco.com

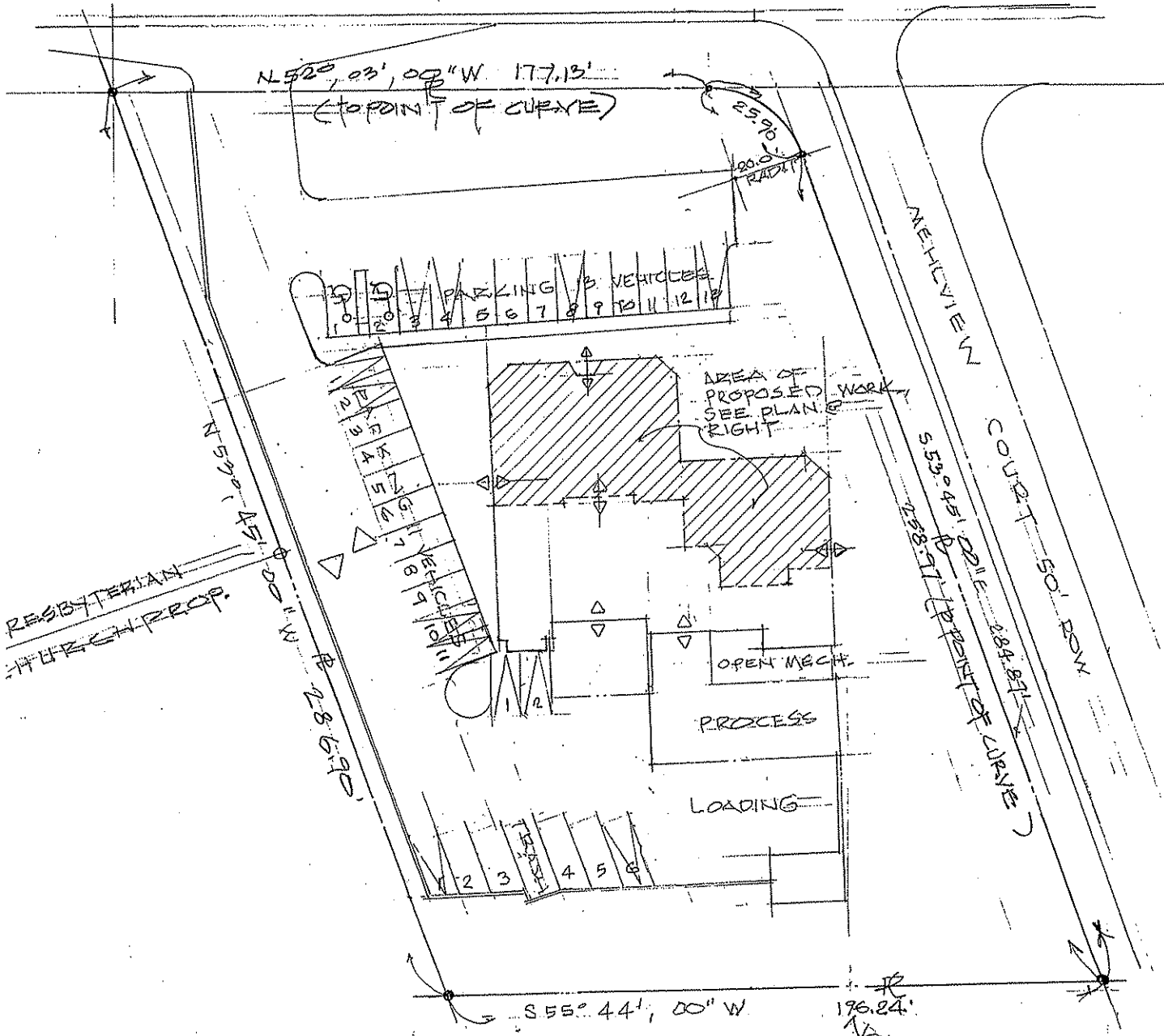
IF YOU WISH TO ATTEND THIS PUBLIC MEETING AND REQUIRE ACCOMMODATION DUE TO DISABILITY, PLEASE CONTACT THE DEPARTMENT OF PLANNING 24 HOURS IN ADVANCE AT (314) 615-2520 OR (314) 615-5467 (TTY - for the hearing impaired).

St. Louis County Planning Commission will hold a public hearing at 7:00 P.M. on Monday FEBRUARY 23,, 2009 in the County Council Chambers, Administration Building, County Government Center, 41 South Central Avenue, Clayton, Missouri 63105. If you wish to attend this public meeting and require accommodation due to disability, please contact the Department of Planning 48 hours in advance at (314) 615-2520 or (314) 615-5467 (TTY - for the hearing impaired). **The Public Hearing Notice may be viewed on the Internet at: <http://www.stlouisco.com> or you may send comments via E-Mail to the Planning Commission c/o Gail Choate at gchoate@stlouisco.com** The Planning Commission may recommend and the County Council may enact by ordinance a zoning district other than that requested in the petition, provided that the recommendation or ordinance is for a district classification of the same use type as that requested by the petition. The following request will be considered at that time:

P.C. 03-09 KRUSE FLORIST, INC., c/o Mark E. Kamp, Watcher, Inc., 108 Industrial Drive, Arnold, Missouri 63010 – a request for an Amended C-8 Planned Commercial District for a 1.2 acre tract of land located at the South corner of Lemay Ferry Road and Mehlview Court. **Proposed use: Florist and offices.**



LEMAY FERRY ROAD (U.S. HWY 6/67) (80' WIDE) ROW



SITE PLAN
 SC 11 = 30:0"

SITE AREA: 54,223.1 SQ. FT. (1.245 ACRES)

UNDER ROOF INSIDE EXTERIOR WALLS
 TOTAL SP. FOOTING = 7025.04' (1/10/09)
 SQUARE FOOTING AREA'S 2 & 3 = 2,413.75'
 SQUARE FOOTING AREA 1 (CRUSE) = 4,611.25'

SITE NOTES

GRADING OF SITE IS NOT PROPOSED
 SANITATION & DRAINAGE FACILITIES WILL REMAIN UNDISTURBED.
 ADDITIONAL LANDSCAPING IS NOT PROPOSED.

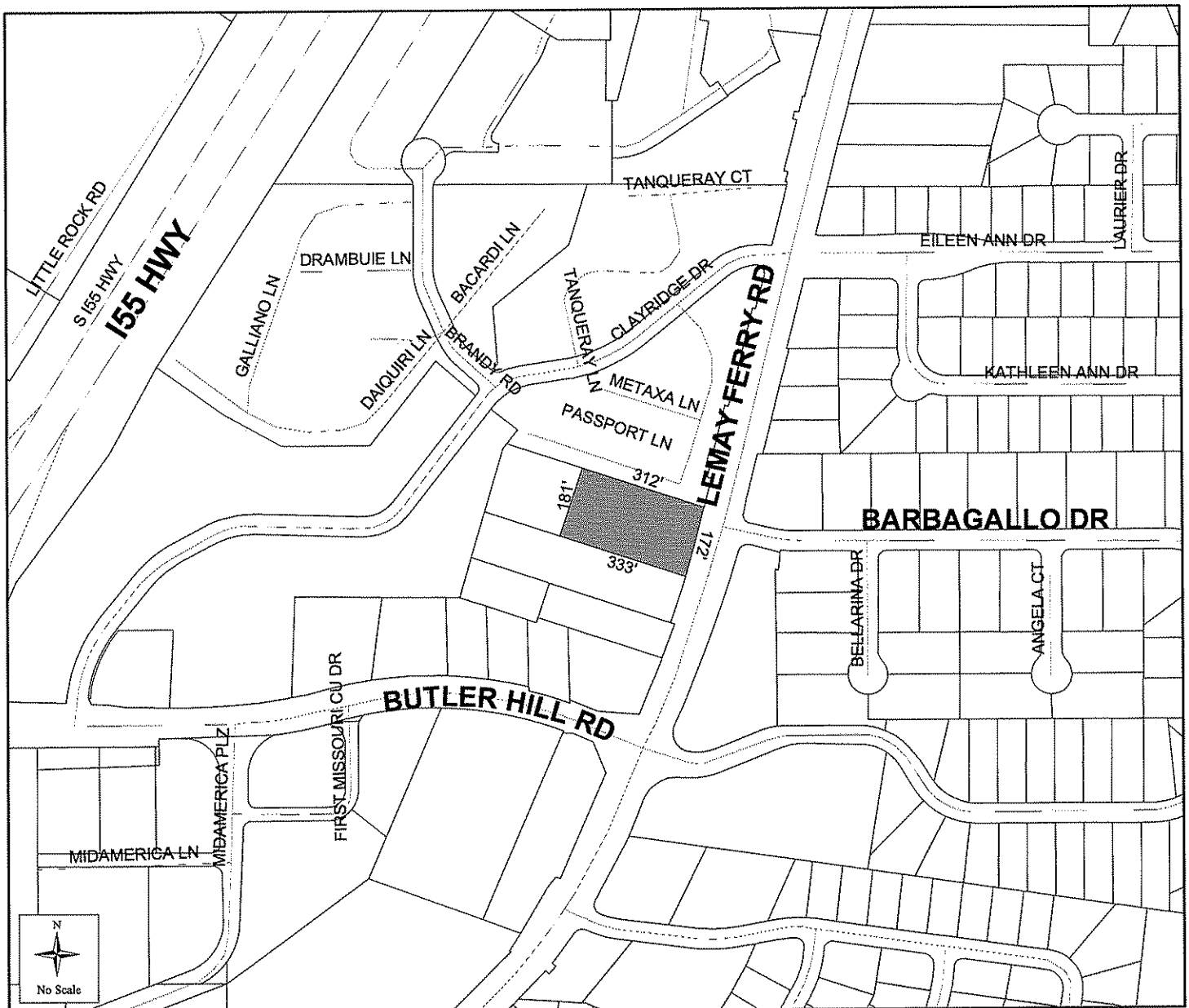
This plan was submitted by the petitioner with the application and is provided for informational purposes only.

INFORMATION CODE BLOCK

TOTAL VEHICLES: A

St. Louis County Planning Commission will hold a public hearing at 7:00 P.M. on Monday FEBRUARY 23, 2009 in the County Council Chambers, Administration Building, County Government Center, 41 South Central Avenue, Clayton, Missouri 63105. If you wish to attend this public meeting and require accommodation due to disability, please contact the Department of Planning 48 hours in advance at (314) 615-2520 or (314) 615-5467 (TTY - for the hearing impaired). **The Public Hearing Notice may be viewed on the Internet at: <http://www.stlouisco.com> or you may send comments via E-Mail to the Planning Commission c/o Gail Choate at gchoate@stlouisco.com** The Planning Commission may recommend and the County Council may enact by ordinance a zoning district other than that requested in the petition, provided that the recommendation or ordinance is for a district classification of the same use type as that requested by the petition. The following request will be considered at that time:

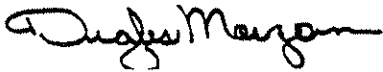
P.C. 04-09 REED LOW AND MARK WOODRUFF, Michael J. Mueller, Cornerstone Land Surveying and Civil Engineering, 2705 Dougherty Ferry Road, Suite 100, St. Louis, Missouri 63122 – a request for a change in zoning from R-2 15,000 square foot Residence District to C-2 Shopping District for a 1.4 acre tract of land located on the west side of Lemay Ferry Road at Barbagallo Drive approximately 350 feet north of Butler Hill Road.



Files and plans are available for inspection at the office of the St. Louis County Department of Planning, Fifth Floor, County Government Administration Building, 41 South Central Avenue, Clayton, Missouri 63105, during the following hours:

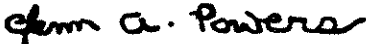
Monday through Friday 8:00 a.m. - 5:00 p.m.
Telephone: (314) 615-2520

ST. LOUIS COUNTY PLANNING COMMISSION



Douglas D. Morgan, Chairman

ATTEST:



Glenn A. Powers
Director of Planning