

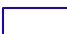
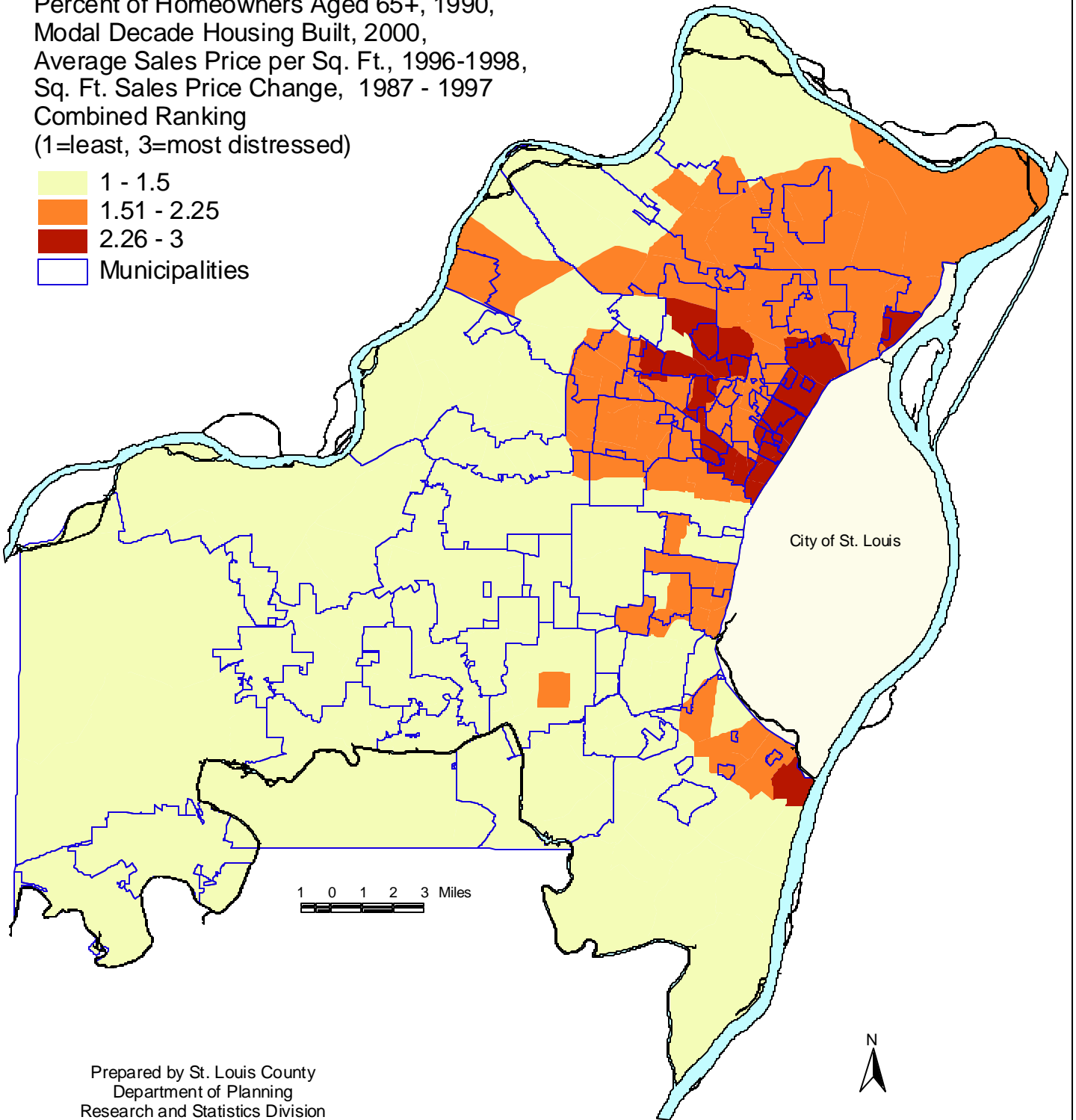


# Housing Combined Ranking by 1990 Census Tracts

Percent Rental Occupancy of Single-Family Homes, 1998,  
Percent of Homeowners Aged 65+, 1990,  
Modal Decade Housing Built, 2000,  
Average Sales Price per Sq. Ft., 1996-1998,  
Sq. Ft. Sales Price Change, 1987 - 1997  
Combined Ranking  
(1=least, 3=most distressed)

-  1 - 1.5
-  1.51 - 2.25
-  2.26 - 3
-  Municipalities



Prepared by St. Louis County  
Department of Planning  
Research and Statistics Division  
November 2000



**IV - Housing - Composite**